

Jasmine House
Juniper Drive, SW18 1GL

PROPERTY SUMMARY

A stylish and generously sized two-bedroom apartment with a private balcony and parking. Spanning 874sqft, the accommodation includes a spacious master bedroom with an ensuite shower room, a second double bedroom, a family bathroom, and a bright open-plan kitchen and reception area leading to the private balcony.

2



2



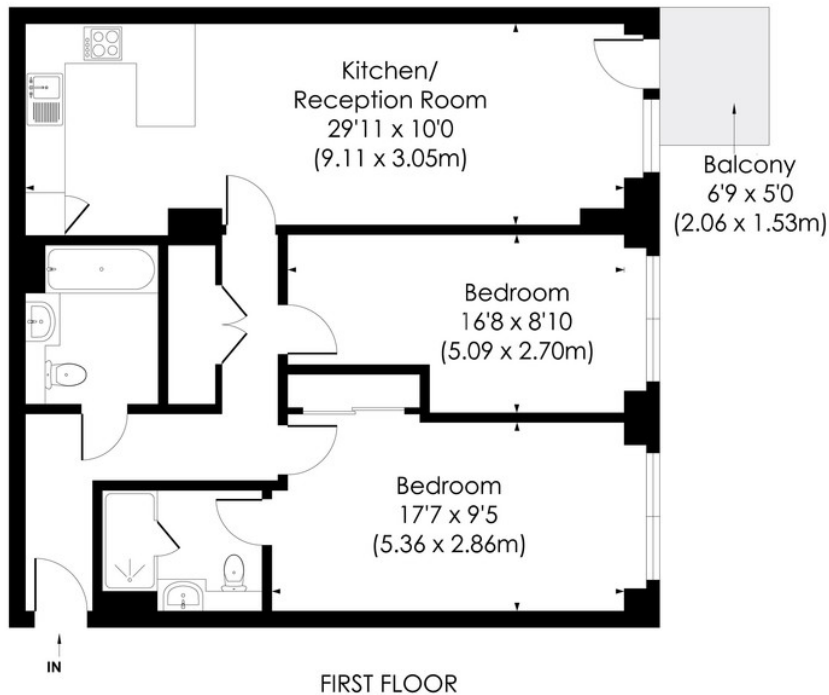
1





BATTERSEA REACH, SW18

Approx. Gross Internal Floor Area
874 Sq. ft/81.17 Sq. m



LOCAL AUTHORITY

Wandsworth Borough Council

TENURE

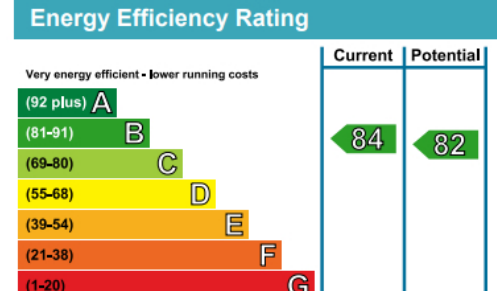
Long Term

COUNCIL TAX BAND

Band F

VIEWINGS

By prior appointment only



Agents Note: Whilst every care has been taken to prepare these particulars, they are for guidance purposes only. All measurements are approximate and are for general guidance purposes only and whilst every care has been taken to ensure their accuracy, they should not be relied upon and potential buyers/tenants are advised to recheck the measurements



4 Vicentia Court
Bridges Wharf
London
SW11 3GY

02073522455
info@hgproperty.co.uk
www.hgproperty.co.uk