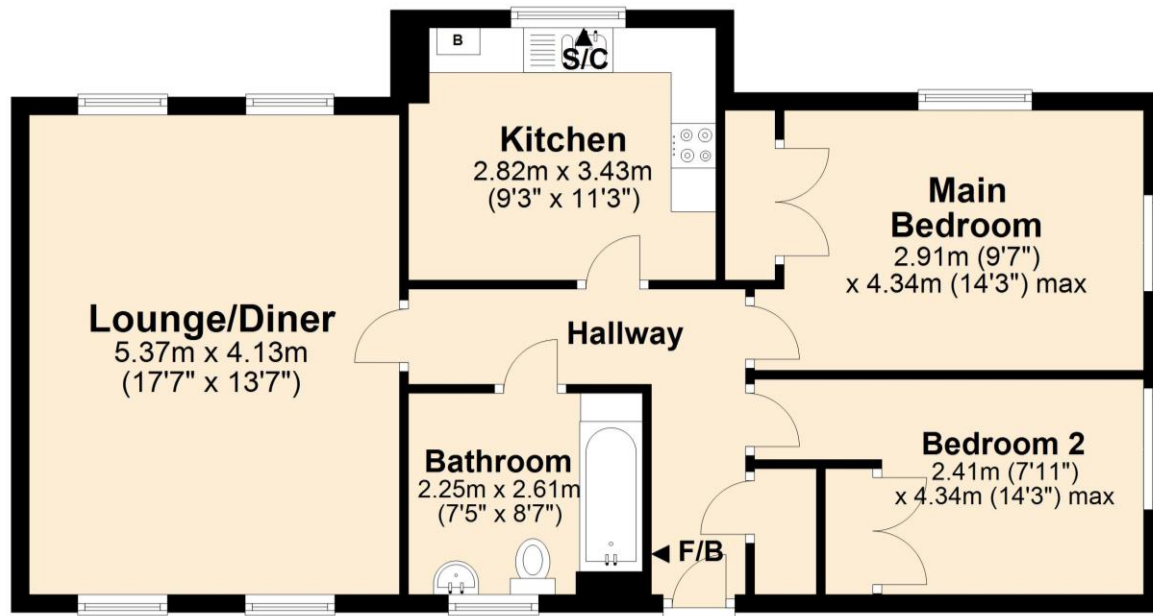


First Floor

Approx. 65.7 sq. metres (707.0 sq. feet)



Total area: approx. 65.7 sq. metres (707.0 sq. feet)

OUTSIDE

To the front of the apartment block is an area of green space plus a generous brickweave area leading to the entrance. The building is accessed via a secure intercom system, with the apartment located on the first floor.

AGENTS NOTE

Please be advised the images reflect the property prior to the current tenancy.

DIRECTIONS

From Morrisons supermarket in Wymondham, turn into Harts Farm Road and then left into Holly Blue Road. Continue over the roundabout onto Wood Avens Way and follow the road before turning left into Burdock Close. At the square turn left where the apartment block can be found ahead of you, fronting onto a brickweave area by the green space.

LOCAL AUTHORITY

South Norfolk

COUNCIL TAX BAND

A

Energy Efficiency Rating Current B 82 Potential B 82



01603 760 770
hello@dragonflylettings.com
www.dragonflylettings.com
Unit 4 Dragonfly Lane, Cringleford, Norfolk, NR4 7FF

Whilst we have endeavoured to ensure these details are a fair and accurate representation of the property at the point of listing, please note that they are for guidance purposes only and we do not seek advice from or liaise with management companies, planning departments or building control in their preparation. We strongly advise that you inspect the property and surrounding area on Google maps and street view prior to viewing. Please also note the photographs do not infer that items shown are included, the measurements quoted are approximate and the fixtures, fittings and appliances have not been tested, therefore no guarantee can be given that they are in working order. If there is any point which is of particular importance to you then please obtain professional confirmation of it.



Be quick to view this 2 bedroom first floor apartment overlooking green space and situated close to Kett's Park in the popular market town of Wymondham. Offering a practical kitchen, dual aspect lounge, 2 bedrooms with built-in storage, bathroom, plus an allocated car parking space and on-street parking – it's not to be missed!

Burdock Close
Wymondham | Norfolk | NR18 0YE
£850 pcm

First floor apartment in a popular and convenient location

2 bedrooms; both featuring built-in storage

11'3 kitchen with integrated oven, hob and extractor

17'7 dual aspect lounge/diner with twin windows to both aspects

Bathroom includes a 3-piece white suite with shower over bath

Gas central heating and double glazing

Located opposite an attractive green space

Allocated parking space plus on-street permit free parking

Ideally situated for Wymondham town centre, amenities and road links

Available mid-end March 2024!

