



2 Elmira Way

, Salford, M5 3DE

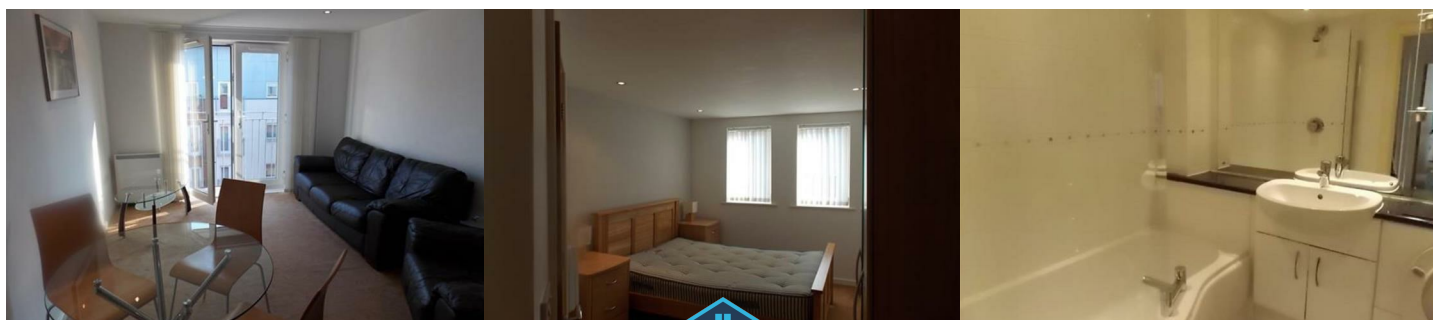
Asking price £170,000



Nextoria are pleased to offer this two bedroom top floor apartment in the popular Salford Quays location. This apartment is spacious, has a an open plan living/dining area and modern fitted kitchen with integrated appliances. It offers two good sized double bedrooms, one with en-suite shower room and stylish master bathroom. The apartment comes with one underground car park space.

Location is excellent as it is close to all transport links including the Metrolink with easy access into Manchester City Centre. There are plenty of shops for convenience including a local Tesco's and also many entries situated in around the beautiful Salford Quays. Viewing recommended!

Tenanted property, perfect for an investor

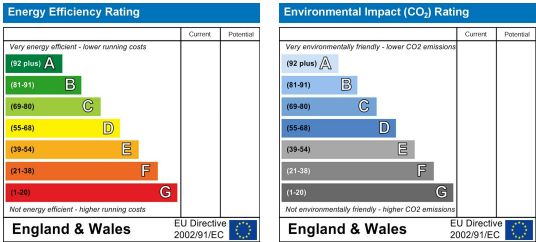


Area Map



Floor Plans

Energy Efficiency Graph



These particulars, whilst believed to be accurate are set out as a general outline only for guidance and do not constitute any part of an offer or contract. Intending purchasers should not rely on them as statements of representation of fact, but must satisfy themselves by inspection or otherwise as to their accuracy. No person in this firms employment has the authority to make or give any representation or warranty in respect of the property.