

Flat 3 Lydon Court 2325 Coventry Road, Birmingham, , B26 3PG

2 Bed Apartment - Retirement

Offers In The Region Of £90,000

📍 Receptions 1

🛏 Bedrooms 2

🚿 Bathrooms 1



- NO UPWARD CHAIN
- OVER 55'S RETIREMENT APARTMENTS
- RESIDENTS LOUNGE
- LAUNDRY ROOM
- MODERN KITCHEN

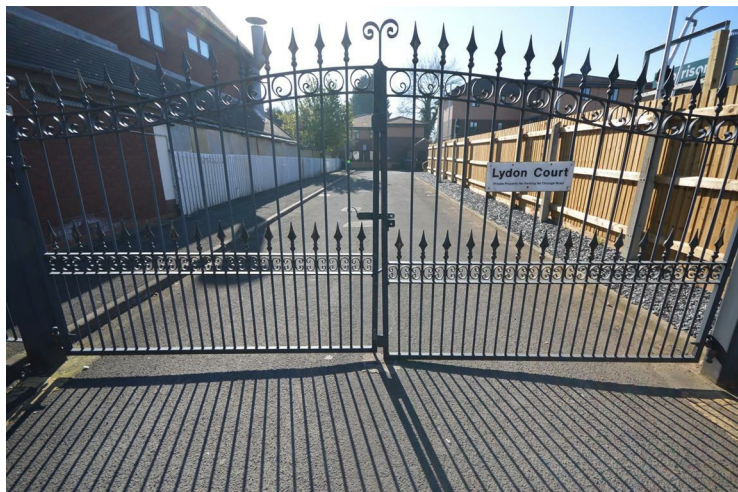
- GROUND FLOOR
- CARELINE ALARM SERVICE
- BATHROOM
- CLOSE TO TRANSPORT
- WALKING DISTANCE TO SUPERMARKET



Flat 3 Lydon Court 2325 Coventry Road, Birmingham, , B26 3PG

EVERYTHING ON YOUR DOOR STEP, This ground floor retirement apartment not only comes with shops and transport within walking distance the property also offers: TWO BEDROOMS, BATHROOM, KITCHEN, RESIDENTS LOUNGE, LAUNDRY ROOM, CARELINE ALARM SERVICE, GARDENS AND PATIO AREAS, NO UPWARD CHAIN, TRANSPORT TO BIRMINGHAM AND COVENTRY

Approach



The property is approached via a gated entrance leading to parking area and communal entrance door leading to:

Communal Area



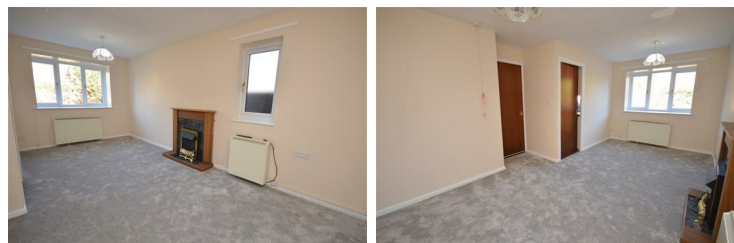
Ceiling light point, meter cupboard and located on the ground floor is main entrance door into:

Entrance Hallway



Two ceiling light points, two storage cupboards, intercom system, electric storage heater and doors to:

Lounge



Dual aspect over looking the front and side of the property, two ceiling light points, care line cord, two electric heater storage heater and door leading into:

Kitchen



Overlooking the front, ceiling light point, care line cord, vinyl flooring, matching wall and base units with work surface over, incorporating a stainless steel sink/drainage unit with mixer tap, space for a cooker and for other appliances.

Bathroom



Ceiling light point, vinyl flooring, care line cord, panelled bath with shower head off the mixer taps, wash hand basin and a low level WC.

Bedroom Two



Over looking the front of the property, ceiling light point, built-in storage and electric heater.

Bedroom One



Over looking the front of the property, ceiling light point, care line cord, and an electric storage heater.

Communal Laundry Room



Residents Lounge Area



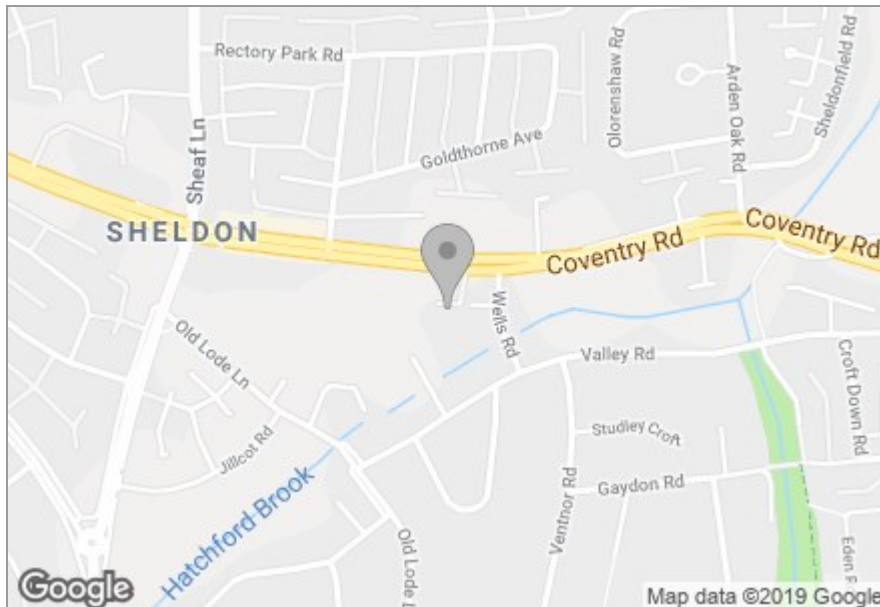
Lydon Court

Ground Floor

Approx. 54.3 sq. metres (584.6 sq. feet)



Total area: approx. 54.3 sq. metres (584.6 sq. feet)



PROPERTY MISDESCRIPTIONS ACT: Ferndown Estates have not tested any equipment, fixtures, fittings or services mentioned and do not by these Particulars or otherwise verify or warrant that they are in working order. All measurements listed are given as an approximate guide and must be carefully checked by and verified by any Prospective Purchaser. These particulars form no part of any sale contract. Any Prospective Purchaser should obtain verification of all legal and factual matters and information from their Solicitor, Licensed Conveyancer or Surveyors as appropriate.

