

# Ascend

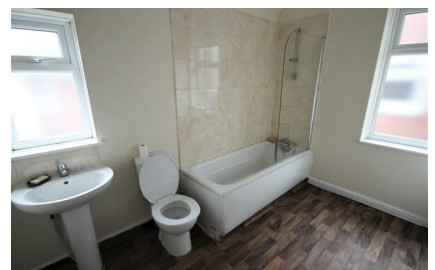
Built on higher standards



## 41 Milford Street Salford M6 5QG

- Bay fronted terrace
- Open lounge/dining area
- Rear Yard
- Spacious bathroom
- Available now
- Two bedrooms
- Separate Kitchen
- On street parking
- Unfurnished
- Close to MediaCityUK and Manchester City Centre

## £600 PCM

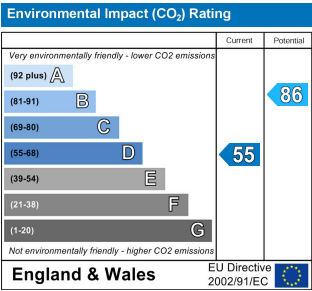
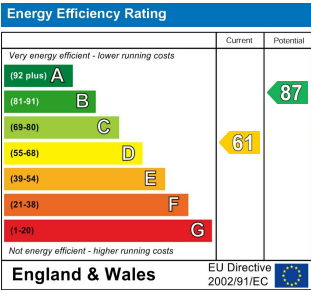


Two bedroom bay-fronted mid-terrace property located in Salford, just 10 minutes away from Manchester – ideal for anyone travelling into the city centre, MediaCityUK and the surrounding areas.

Boasting great space throughout to the ground floor there are two generous-sized reception rooms and separate kitchen which provides access to the rear yard. To the first floor there are two double bedrooms and modern bathroom suite.

Along with easy access to the M602/M60 motorways, you also have Weaste Metrolink just a 5 minute stroll away, so you're perfectly connected for work and play. Salford shopping centre is just a 7 minute drive away and has a huge range of amenities on offer, including an Aldi, PureGym, Argos, Home Bargains, Subway, Boots and plenty more. Literally everything you could need is within easy reach.

The property is available immediately on an unfurnished basis. Images are for marketing purposes only.



# Ascend

Built on higher standards

0161 707 7584

192 Monton Road, Monton, Manchester, M30 9PY

monton.sales@ascendproperties.com,  
monton.lettings@ascendproperties.com  
www.ascendproperties.com



These particulars, whilst believed to be accurate are set out as a general outline only for guidance and do not constitute any part of an offer or contract. Intending purchasers should not rely on them as statements of representation of fact, but must satisfy themselves by inspection or otherwise as to their accuracy. No person in this firm's employment has the authority to make or give any representation or warranty in respect of the property