

*tavistockbow*

**For Rent**



**People Make Places**



**Berwick Street, Soho W1**

Studio | 366 sq ft

£475 pw





This bright studio apartment overlooks the Soho's buzzing Berwick Street Market. On the first floor of a period building and with good ceiling height, the well-proportioned studio space has a separate kitchen, bathroom and plentiful storage. Available September immediately.

#### What you need to know

- Studio room
- One bathroom
- First floor (no lift)
- Good storage
- Wooden flooring throughout
- Unfurnished
- Double glazing
- Separate kitchen
- Available September
- Views to Duck & Rice



**Berwick Street, Soho W1**





### Overview

Set amongst the best restaurants and coffee shops the West End has to offer, this lovely Soho studio is situated on the first floor of a period building. Neutrally decorated to allow a tenant to make their mark on the space, the studio is well laid out with a separate kitchen with white units. Useful storage can be found in the hallway as well as a cupboard in the studio space, there is a white suite bathroom with shower over bath and wooden floors throughout. Secondary glazing is fitted for tenant comfort.

Berwick Street is steeped in history having been a hub for the music scene over the decades in addition to attracting numerous haberdasheries and today the Berwick Street Food Market that serves food from around the world. Much of Central London is accessible on foot including Covent Garden, Mayfair, St James's and Fitzrovia, while transport links can be accessed by Oxford Circus (Bakerloo, Central and Victoria Lines) and Tottenham Court Road (Central, Northern and Elizabeth Lines) Underground Stations, both a short walk away.

— [View this property on a map](#) — [View this property on a map](#) — [View this property on a map](#)



# People Make Places

London is a collection of inspiring urban villages and one of the most exciting places in the world to live, work & play.

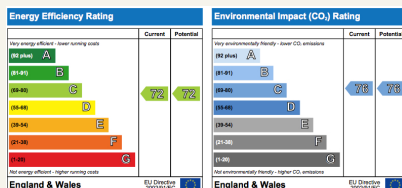
We work with both property owners and their occupiers, sharing the story of these vibrant neighbourhoods, conveying the unique soul & energy to future custodians, the people who'll keep them buzzing.

And unlike many real estate businesses we're not just about buildings, because streets & buildings don't make a neighbourhood.

We're about building relationships, because **people make places**.

MISINTERPRETATION ACT (COPYRIGHT) DISCLAIMER: Tavistock Bow Ltd for themselves and for the vendor(s) of this property whose agents they are, given notice that: 1. These particulars do not constitute, nor constitute any part of, an offer or contract. 2. None of the statements contained in these particulars as to the property are to be relied on as statements or representations of fact. 3. Any intending purchaser or lessee must satisfy themselves by inspection or otherwise as to the correctness of each of the statements contained in these particulars. 4. The vendor(s) or lessor(s) do not make or give and neither Tavistock Bow Ltd nor any person in their employment has any authority to make or give any representation or warranty whatever in relation to this property. Finance Act 1989, Unless otherwise stated all prices and rents are quote exclusive of VAT. Property Misrepresentation Act 1991; These details are believed to be correct at the time of compilation but may be subject to subsequent amendment.

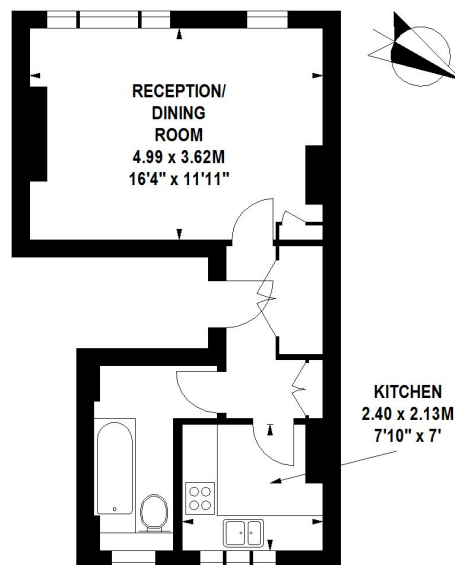
Follow us: [x](#) [f](#) [@](#) [in](#) @tavistockbow



## Berwick Street, W1F

Approximate gross internal area

34 sq m / 366 sq ft



### First Floor

Floor Plan produced for Tavistock Bow by Mays Floorplans © . Tel 020 3397 4594

Illustration for identification purposes only, not to scale

All measurements are maximum, and include wardrobes and window bays where applicable

**tavistockbow**

21 New Row, Covent Garden,  
London, WC2N 4LE

t: 020 7477 2177

e: [hello@tavistockbow.com](mailto:hello@tavistockbow.com)

w: [tavistockbow.com](http://tavistockbow.com)



**Berwick Street, Soho W1**