

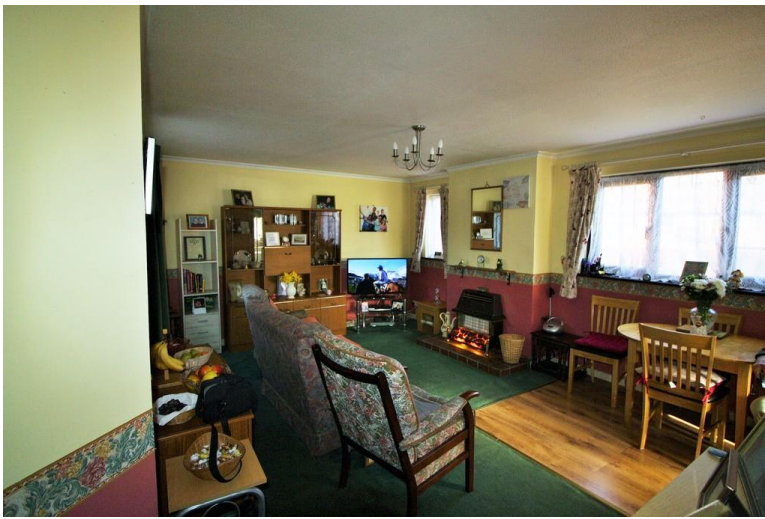


24 PIPPIN CLOSE, EXETER, EX1 3UA

£235,000







**FULL DESCRIPTION** 3 Bedroom semi-detached bungalow with a huge loft space offer great potential. The accommodation comprises, lounge, kitchen 3 bedrooms and a bathroom. Outside there is a driveway that leads to a garage and gardens to both the front and rear. The property is tucked away at the end of a cul-de-sac.

#### FRONT DOOR

**ENTRANCE HALL** Built in cupboard

**LIVING ROOM** 17' 9" x 12' 10" (5.42m x 3.93m) Spacious room with windows overlooking the front garden. A door leads out to the rear patio garden. Feature fireplace.

**KITCHEN** 9' 5" x 6' 8" (2.88m x 2.05m) Fitted kitchen which looks out over the front gardens and with a door on to the gardens.

**BEDROOM 1** 12' 11" x 8' 1" (3.94m x 2.47m) Double bedroom with a rear aspect overlooking the rear garden

**BEDROOM 2** 10' 0" x 6' 7" (3.05m x 2.03m) Window with front aspect.

**BEDROOM 3** 9' 4" x 6' 1" (2.86m x 1.86m) Bedroom with rear aspect.

**FRONT GARDEN** Driveway leads to a single garage. A side gate leads through to an enclosed garden laid to lawn with raised flower borders and a patio area.

**REAR GARDEN** Patio garden with a gate that provides rear access

%epcGraph\_c\_1\_304%

