

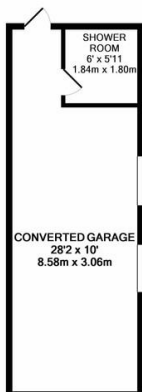
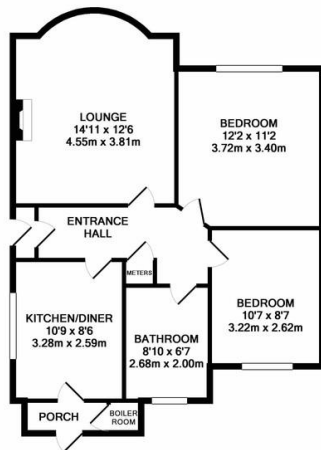


Property Summary

Unique and versatile two bedroom bungalow available to rent on Norfolk Road, Wigston. Comprising wheelchair friendly entrance hall, spacious living room, two bedrooms, kitchen / diner and bathroom with additional separate shower, the property also benefits from a converted detached garage with lighting and heating.



EPC : TBC



FLOORPLAN BY PHILLIPS GEORGE ESTATE AGENTS

TOTAL APPROX. FLOOR AREA 926 SQ.FT. (86.0 SQ.M.)

Whilst every attempt has been made to ensure the accuracy of the floor plan contained here, measurements of doors, windows, rooms and any other items are approximate and no responsibility is taken for any error, omission, or mis-statement. This plan is for illustrative purposes only and should be used as such by any prospective purchaser. The services, systems and appliances shown have not been tested and no guarantee as to their operability or efficiency can be given.

Made with Metropix 6/2019

- Two Bedrooms
- Bungalow
- Off Road Parking
- Entrance Hall
- Kitchen / Diner
- Bath & Shower
- Large Garden
- Converted Garage

phillips george | sales & lettings

Agents Note: Whilst every care has been taken to prepare these sales particulars, they are for guidance purposes only. All measurements are approximate and for general guidance purposes only and whilst every care has been taken to ensure their accuracy, they should not be relied upon and potential buyers are advised to recheck the measurements.

46 Long Street, Wigston, Leicestershire, LE18 2AH

info@phillipsgeorge.co.uk

0116 216 8178