

Girton Way, Mickleover, Derby
50% Shared ownership £79,950



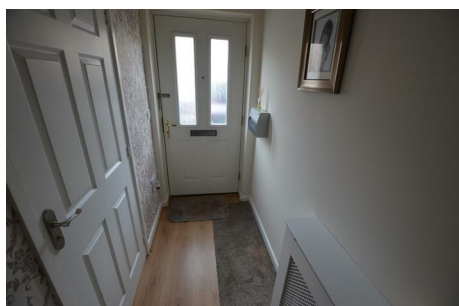
110 Girton Way, Mickleover, Derby, DE3 9EB

50% Shared ownership £79,950

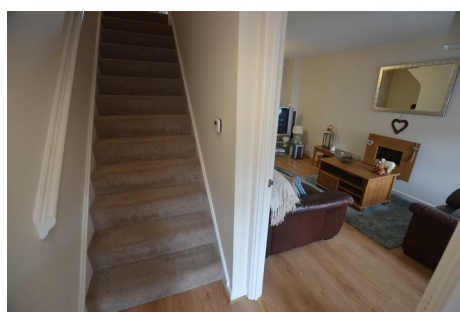


A delightful modern mews home offering sizeable well tended accommodation and situated in this highly aspirational locality, available on a 50% shared ownership. A full inspection will reveal a tastefully appointed, gas centrally heated and UPVC double glazed property briefly comprising; reception hall, sitting room, well equipped dining kitchen. On the first floor a landing leads to two sizeable bedrooms and bathroom with white suite. Outside, the property stands in a private court yard with car parking to the front with a well tended garden to the rear.

Reception Hall



With composite and opaque double glazed entrance door, radiator and staircase to first floor.



Guest's Cloakroom / Wc

Having white two piece suite comprising; low flush Wc, wash hand basin, radiator and UPVC double glazed window.

Sitting Room 18'2 x 10'0 (5.54m x 3.05m)



Having Tv connection point, radiator and UPVC double glazed window to front aspect.



Dining Kitchen 13'6 x 9'3 (4.11m x 2.82m)



Having a full range of 'birch effect' modern fitted wall and base units, inset four ring hob with electric oven and grill, canopy extractor hood, tiled splashbacks, inset stainless steel sink top with hot and cold mixer tap, space and plumbing for automatic washing machine, radiator and UPVC double glazed window.



110 Girton Way, Mickleover, Derby, DE3 9EB

50% Shared ownership £79,950



First Floor Landing

With access to roof space, radiator and turned spindle balustrade.

Bedroom One 11'5 x 10'0 (3.48m x 3.05m)



Built in cupboard, radiator, radiator and two UPVC double glazed windows.



Bedroom Two 13'8 x 9'4 (4.17m x 2.84m)



Having radiator and UPVC double glazed window.

Bathroom

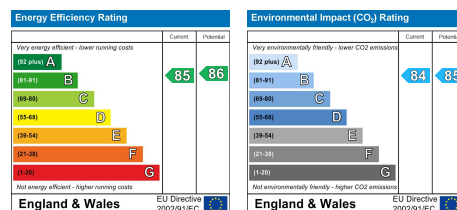


Having white three piece suite comprising; low flush Wc, pedestal wash hand basin and panelled bath with shower over, shaver socket, radiator and extractor fan.

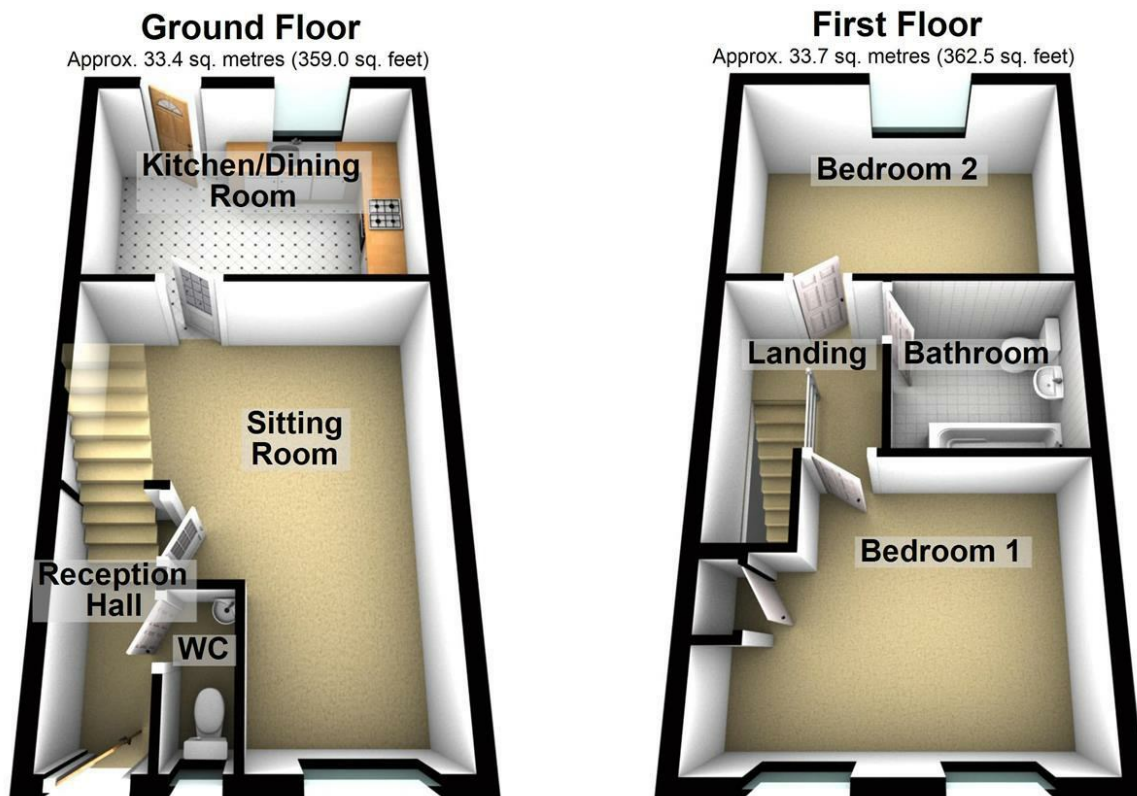
Outside



The property occupies a private position with off road car parking and mature lawned rear garden with patio and gated access.



110 Girton Way, Mickleover, Derby, DE3 9EB
50% Shared ownership £79,950



Total area: approx. 67.0 sq. metres (721.5 sq. feet)