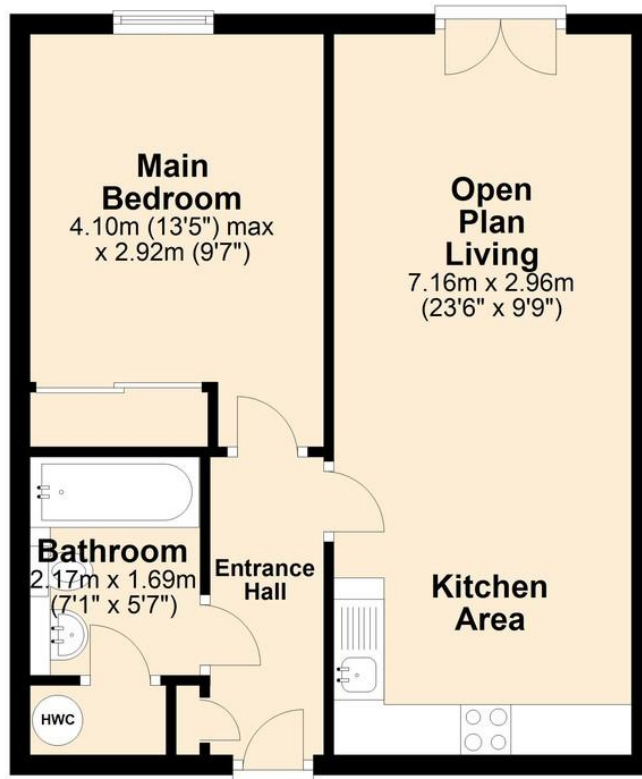


Third Floor

Approx. 42.8 sq. metres (460.9 sq. feet)



Total area: approx. 42.8 sq. metres (460.9 sq. feet)

THE PAVILION

The Pavilion was formally Norwich's original Norfolk & Norwich Hospital. Situated on the cusp of the Golden Triangle, the building features an array of bespoke properties with stair and lift access, secure parking, electric heating and double glazing. There is a large open communal entrance hall with secure letter boxes and an entry phone system. A further central atrium and security doors lead to the various access routes throughout the building.

AGENTS NOTE

Please be advised the images reflect the property during a previous tenancy.

DIRECTIONS

From the roundabout at the top of St Stephens Street, head towards Newmarket Road. The Pavilion building is on the right-hand side, set back from the road through a gated entrance.

LOCAL AUTHORITY

Norwich

COUNCIL TAX BAND

A

Energy Efficiency Rating Current B 86 Potential B 86



01603 760 770
hello@dragonflylettings.com
www.dragonflylettings.com
Unit 4 Dragonfly Lane, Cringleford, Norfolk, NR4 7FF

Whilst we have endeavoured to ensure these details are a fair and accurate representation of the property at the point of listing, please note that they are for guidance purposes only and we do not seek advice from or liaise with management companies, planning departments or building control in their preparation. We strongly advise that you inspect the property and surrounding area on Google maps and street view prior to viewing. Please also note the photographs do not infer that items shown are included, the measurements quoted are approximate and the fixtures, fittings and appliances have not been tested, therefore no guarantee can be given that they are in working order. If there is any point which is of particular importance to you then please obtain professional confirmation of it.



Offering stunning city views, this 1 bedroom, fully-furnished third floor apartment is located in the centre of Norwich so you can make the most of city living. Accommodation includes a 23'6 open plan living area, bathroom with 3-piece suite and 13'5 main bedroom with storage, plus an allocated parking space.

The Pavilion

Norwich | Norfolk | NR1 3SN

£895 pcm

Fully furnished, third floor apartment in great condition

1 double bedroom with built-in storage

23'6 open plan living area with contemporary kitchen and Juliet balcony

Bathroom with 3-piece suite and shower over bath

Electric air source heating and double glazing

Attractive shared gardens

Allocated parking space

Impressive views across the city

Excellent city centre location with shops and restaurants nearby

Available start of January 2024!

