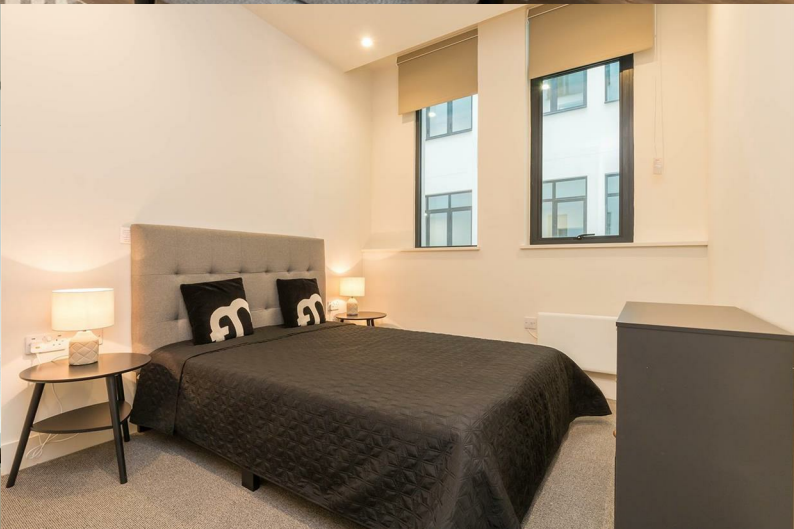


NO MOVE-IN FEES

**RENT
ME**



The Lightwell, B3 2EE

CITY CORE

£1,400 PCM+ FEES

available from 1st April 2019

- Available now
- Two contemporary double bedrooms, one being en-suite
- High quality fixtures, fittings and finishes throughout
- A 8 min walk to Birmingham New Street
- Tenancies fully-managed by FleetMilne
- Brand new, high quality apartment
- Two bathrooms with high quality fixtures and fittings
- Central Colmore Business District city core location
- A 4 min walk to Snow Hill Station



fleetmilne.co.uk

0121 366 0456

FleetMilne