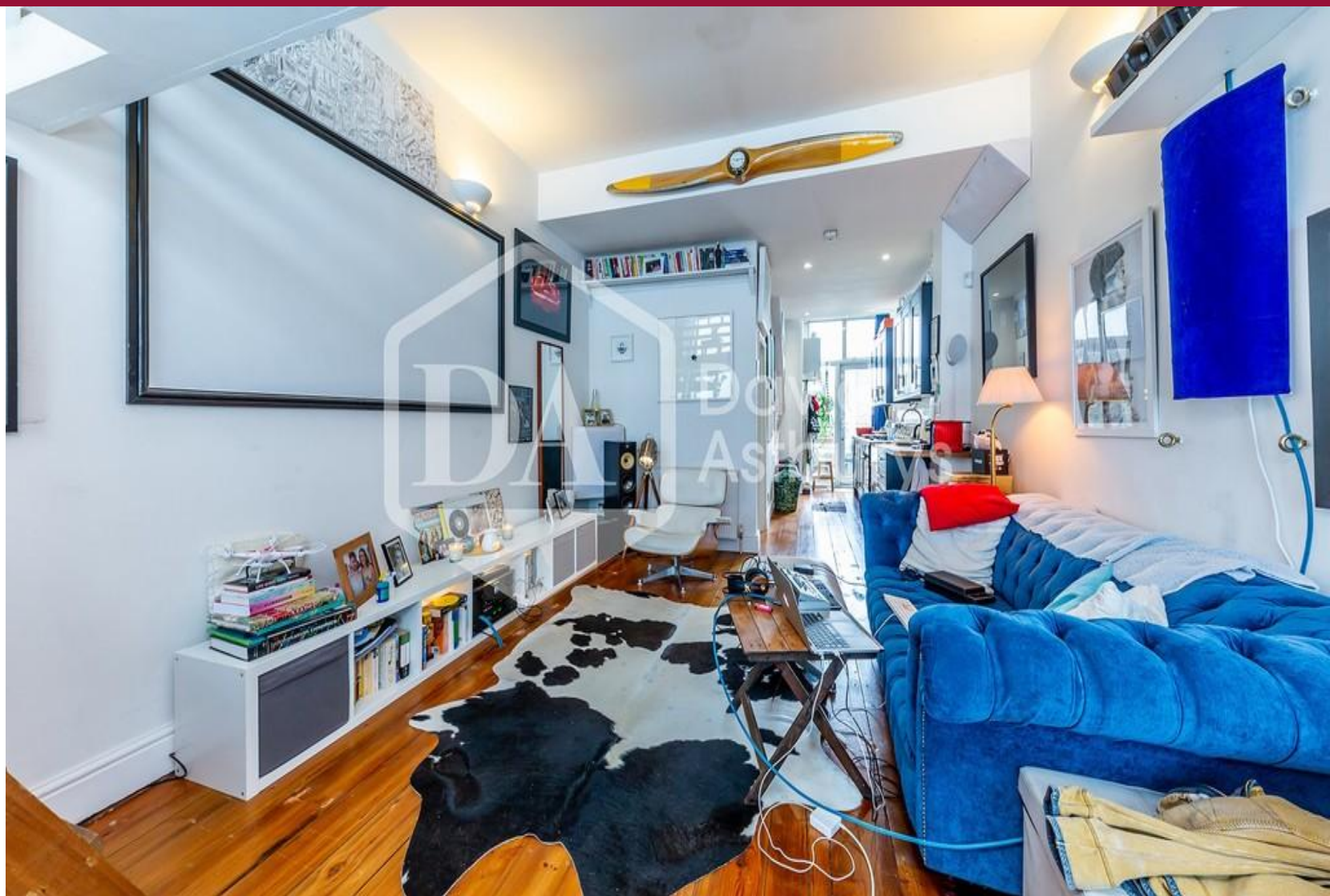
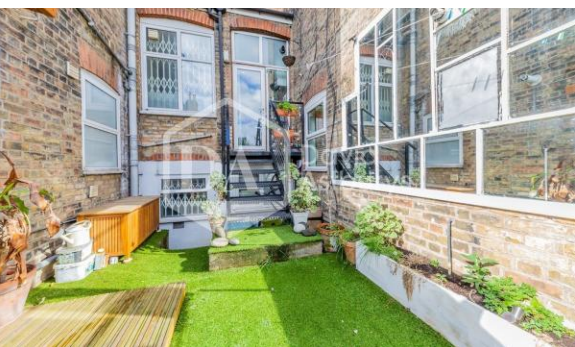




David
Astburys



- Private Garden
- Mezzanine Sleeping Level
- Ground Floor
- Lease of 118 Years
- Modern Bathroom
- Modern Kitchen

Wightman Road, Haringey N4

£308,500

A trendy 478 square feet ground floor studio flat, which boasts its own private rear garden. Further benefits include a modern kitchen and bathroom, a long lease of approximately 113 years and a mezzanine sleeping level maximising the space of the apartment.

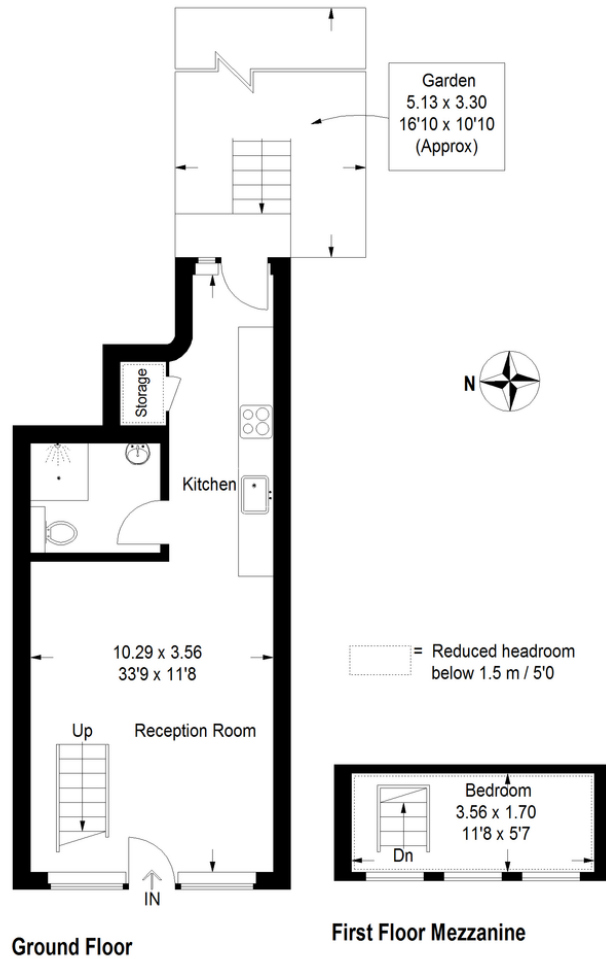
Wightman Road is positioned a short walk from Green Lanes which offers a plethora of local restaurants, cafes and grocers. Transportation nearby includes Manor House Underground Station (Piccadilly Line Zone 2) which is 0.5 miles away, Haringay Rail Station which is 0.1 miles away (to Kings Cross or Moorgate in less than 20 minutes) as well as London Overground from Haringay Green Lanes which is 0.3 miles away.

Wightman Road, N4 1RU

Approximate Gross Internal Area = 37.2 sq m / 401 sq ft

First Floor Mezzanine = 7.1 sq m / 77 sq ft

Total = 44.3 sq m / 478 sq ft



Measured in accordance with RICS Code of Measuring Practice. To be used for identification and guidance purposes only. Whilst every care is taken in the preparation of this plan, please check all dimensions, shapes and compass bearings before making any decisions reliant upon them. www.davidastburys.co.uk ©2019 info@davidastburys.co.uk



15 Park Road, Crouch End,
London, N8 8TE

<http://www.davidastburys.com>
0203 000 6787
crouchend@davidastburys.com

Agents Note: Whilst every care has been taken to prepare these sales particulars, they are for guidance purposes only. All measurements are approximate and for general guidance purposes only and whilst every care has been taken to ensure their accuracy, they should not be relied upon and potential buyers are advised to recheck the measurements.