



NEXA

ASKING PRICE: £1200 P.C.M

LOCATION: GUNWHARF QUAYS

TWO BEDROOM APARTMENT – 4TH FLOOR

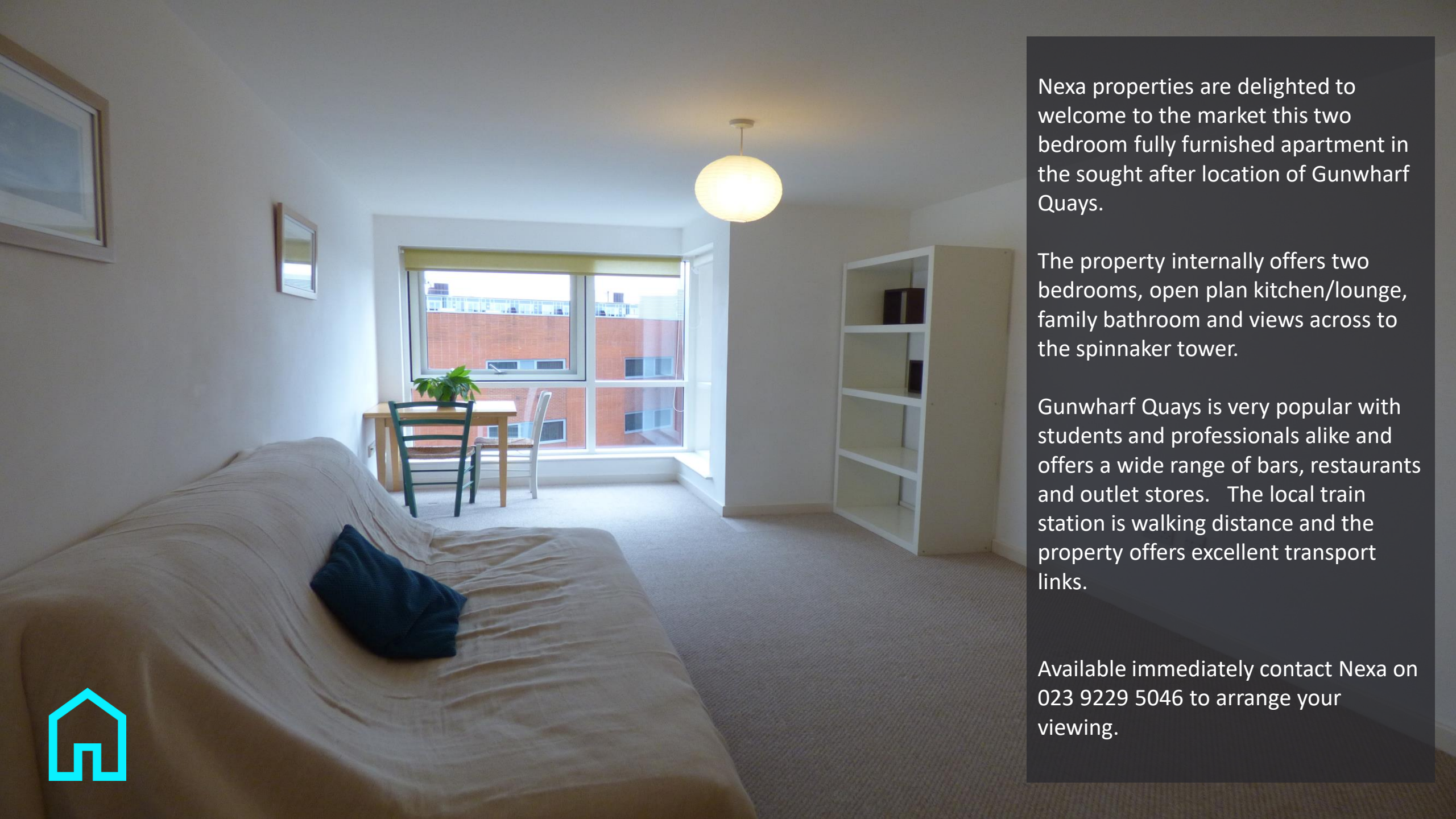
NEXA PROPERTIES

15 Hampshire Terrace Portsmouth,
Hampshire, PO1 2QF

T: 02392 295046

W: [nexaproperties.com](https://www.nexaproperties.com)

E: hello@nexaproperties.com



Nexa properties are delighted to welcome to the market this two bedroom fully furnished apartment in the sought after location of Gunwharf Quays.

The property internally offers two bedrooms, open plan kitchen/lounge, family bathroom and views across to the spinnaker tower.

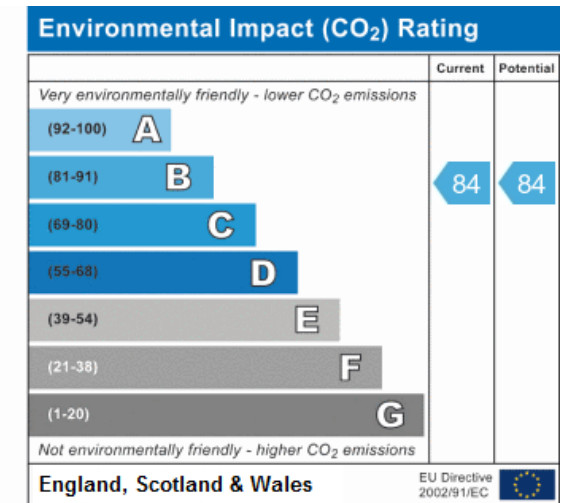
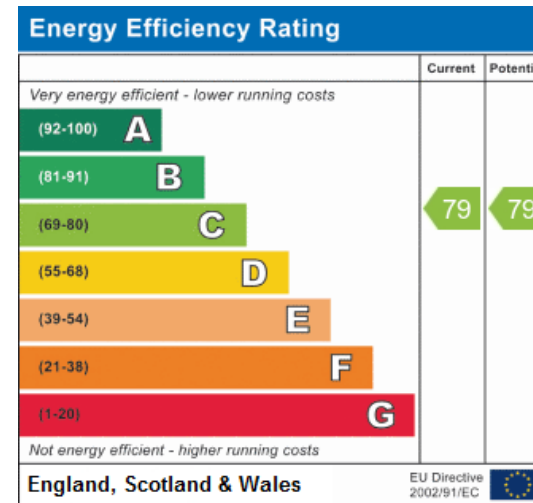
Gunwharf Quays is very popular with students and professionals alike and offers a wide range of bars, restaurants and outlet stores. The local train station is walking distance and the property offers excellent transport links.

Available immediately contact Nexa on 023 9229 5046 to arrange your viewing.





- REQUESTED LOCATION
- FULLY FURNISHED
- AVAILABLE IMMEDIATELY
- OPEN PLAN KITCHEN/LOUNGE
- LIFT SERVICE
- 4TH FLOOR
- EXCELLENT TRANSPORT LINKS
- GUNWHARF QUAYS



THANK YOU

