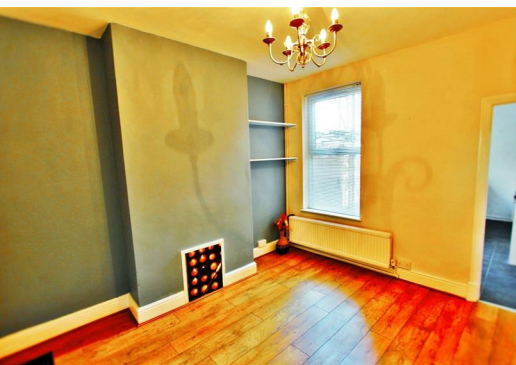




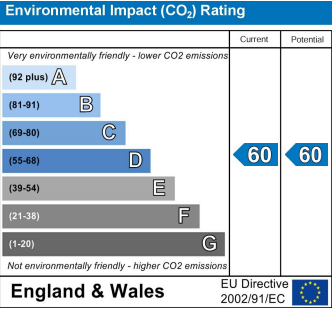
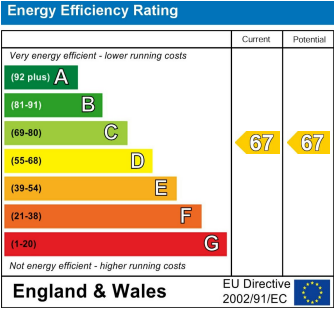
Knighton Fields Road West,

Leicester, Leicestershire, LE2 6LH

£650 PCM



A stunning 2 bedroom property located in the Aylestone area and with good links to the city centre and motorways. Benefiting from gas central heating, double glazing, on-street parking, rear garden with external storage. The ground floor comprises of: two reception rooms (the first which has a log burning fire), kitchen with washing machine/fridge freezer/built-in gas hob & electric oven. The first floor comprises of: two double bedrooms, and bathroom which benefits from both shower cubicle and bath. Offered on an unfurnished basis. Available now!



t: 01163660990 e: oadby@newtonfallowell.co.uk
www.newtonfallowell.co.uk