

LETTINGS

01225 303 870

SALES

01225 471 144

lettings@theapartmentcompany.co.uk

sales@theapartmentcompany.co.uk

www.theapartmentcompany.co.uk



THE APARTMENT COMPANY®



Walcot Parade

Enjoy everything Bath has to offer

We are delighted to bring to the market, this bright first floor Georgian apartment located just a stones throw from Bath city centre. Newly decorated, comprising; sitting room with original cornicing and delightful views over Hedgemoor Park, double bedroom with second bedroom, kitchen and family bathroom. Just a short walk to local shops and amenities and easy access to the M4, we recommend an early viewing.

RENT **£975 pcm**

Georgian splendour in the heart of Bath

Unfurnished | PRICE £975 pcm | Close to City Centre | Two bedrooms | Night storage heaters | Council Tax Band C | Permit parking | White goods included | Available End of June 2019 | Agency fees £420 inc VAT | Central location

SITTING ROOM

4.55 x 3.89 (14'11" x 12'9")

Dual aspect to front elevation with four sash windows. Views. Telephone entry phone. Night storage heater. Telephone point.

INNER HALLWAY

Doors leading to:

KITCHEN

5.94 x 2.36 max (19'6" x 7'9" max)

Dual aspect with two sash windows to side and rear elevation. Wall cupboard and range of base cupboards with worktops over. Single drainer sink unit. Wall tiling. Washer-drier. Slot in Belling double oven/grill and four ring hob. Electric panel heater. Vinyl flooring. Airing cupboard housing hot water cylinder.

MASTER BEDROOM

3.51 x 2.90 (11'6" x 9'6")

Sash window to front elevation. Views. Four built in storage cupboards. Night storage heater.

SECOND BEDROOM

3.23 x 1.83 (10'7" x 6'0")

Sash window to rear elevation. Night storage heater.

BATHROOM

2.18 x 1.70 (7'2" x 5'7")

White suite comprising panelled bath with Triton shower over, wash hand basin and WC. Part tiled walls. Electric shaver light. Vinyl flooring. Extractor. Dimplex electric wall heater.





Lettings
01225 303 870

Sales
01225 471 144

sales@theapartmentcompany.co.uk
lettings@theapartmentcompany.co.uk
www.theapartmentcompany.co.uk



LETTINGS

01225 303 870

SALES

01225 471 144

lettings@theapartmentcompany.co.uk

sales@theapartmentcompany.co.uk

www.theapartmentcompany.co.uk

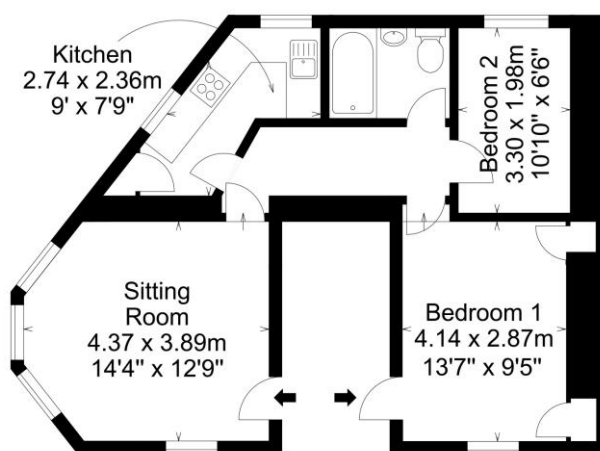


THE APARTMENT
COMPANY®

Bath, BA1 6AB
Approx. Gross Internal Area
576 Sq Ft - 53.51 Sq M



TOWN &
COUNTRY
MEDIA



First Floor

These plans are prepared in accordance with the guidelines as set out by the RICS Code of Measuring Practice. Whilst every attempt has been made to ensure accuracy, all measurements should be treated as approximate and as such are for illustrative purposes only. Not to Scale. Photos | Floor Plans | Energy Performance Certificates | Design | Print www.townandcountrymedia.co.uk © Town & Country Media 2015

THINKING OF LETTING YOUR PROPERTY?

Give our lettings team a call
today on 01225 303 870

Walcot Parade

Bath, BA1 5NF



We take every care in preparing our sales details, they are produced in good faith but do not form any part of any contract. They are checked and usually verified by the Vendor. We do not guarantee appliances, alarms, electrical fittings, plumbing, showers etc; you must satisfy yourself that they operate correctly. Room sizes are approximate; they are taken in imperial and converted to metric, do not use them to buy carpets or furniture. We cannot verify the tenure, as we do not have access to the legal title, we cannot guarantee boundaries or rights of way, you must take the advice of your legal representative. Photographs are reproduced for general information only and do not imply that any item is included for sale with the property. If there is any point that is of particular importance to you, please contact the office and we will be pleased to check the information. Do so particularly if contemplating some distance to view the property.

