



The Beeches, Edendale Avenue,
Blyth
£495 pcm



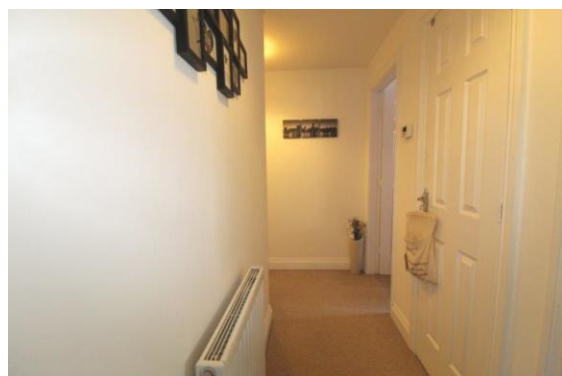
Lennon
Properties



The Beeches,
Edendale Avenue, Blyth,
NE24 5HS
£495 pcm

*** NEW TO THE RENTAL MARKET ***

** TWO BEDROOM GROUND FLOOR APARTMENT - MODERN APARTMENT BLOCK- We are delighted to welcome to rental the market this two bedroom ground floor apartment situated on The Beeches, Edendale Avenue, Blyth. This modern apartment complex is well located providing good access to schools, shops and public transport links. The building is entered via a secure intercom entry system and communal entrance. Accommodation briefly comprises of entrance hallway, lounge/ dining room, kitchen, two bedrooms and bathroom. The property is well appointed throughout and benefits from combi-boiler gas central heating and upvc double glazing. Externally there are communal gardens, an allocated parking space and visitor parking bays. Viewings are highly recommended.



COMMUNAL ENTRANCE

HALLWAY

Via intercom entry

LOUNGE

9' 8" x 17' 8" (2.95m x 5.39m)

KITCHEN

BEDROOM ONE

14' 3" x 10' 11" (4.35m x 3.35m)

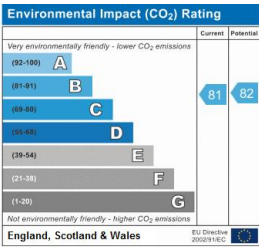
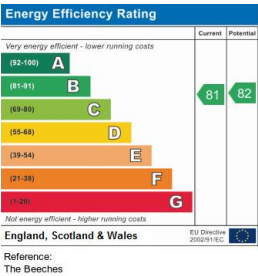
BEDROOM TWO

10' 8" x 6' 11" (3.26m x 2.13m)

BATHROOM

EXTERIOR

Allocated parking bay



These particulars are intended to give a fair and reliable description of the property but no responsibility for any inaccuracy or error can be accepted and do not constitute an offer or contract. We have not tested any services or appliances (including central heating if fitted) referred to in these particulars and the purchasers are advised to satisfy themselves as to the working order and condition. If a property is unoccupied at any time there may be reconnection charges for any switched off / disconnected or drained services or appliances – All measurements are approximate. MONEY LAUNDERING REGULATIONS 2003 intending purchasers will be asked to produce identification and proof of financial status when an offer is received. We would ask for your co-operation in order that there will be no delay in agreeing the sale.

1 Seaforth Street, Blyth, Northumberland, NE24 1AY

01670719600

Email: blyth@lennonproperties.co.uk

www.lennonproperties.co.uk



Lennon
Properties