

# CHANGING HOME



Bradford Street | Handbridge | Chester | CH4 7DE

£270,000

Located in a most sought after part of popular Handbridge a spacious and well appointed Three bedroom mid-terrace home.

Hall, living room, sitting room and kitchen. 3 bedrooms and bathroom. Rear courtyard. The property has many character features and early viewing is advised. **NO ONWARD CHAIN!**

## Property Description

### LOCATION

The property is set in the very heart of sought after Handbridge within very popular Bradford Street. Handbridge boasts an array of high quality shops, restaurants and public houses. The Meadows, River Dee and City Centre is within a short walk. Access to Chester Business Park and Main A55 is simple.

### HALL

Accessed via a timber front door. With a dado and picture rail. Radiator and under stairs cupboard.

### LIVING ROOM

11' 10" x 11' 4" (3.61m x 3.45m) With an attractive feature fireplace with tiled surround and slate hearth. Timber floor, sash window and picture rail.

### DINING ROOM

12' 5" x 11' 3" (3.78m x 3.43m) With a picture rail, sash window and tiled floor. Wood burning stove with tiled hearth. Shelving and radiator.

### KITCHEN

9' 3" x 6' 4" (2.82m x 1.93m) With a range of fitted floor and wall units. Sink unit. Stainless steel extractor hood with space for a gas cooker below. Tiled floor and recessed spotlights. Stable type door to the rear.

### LANDING

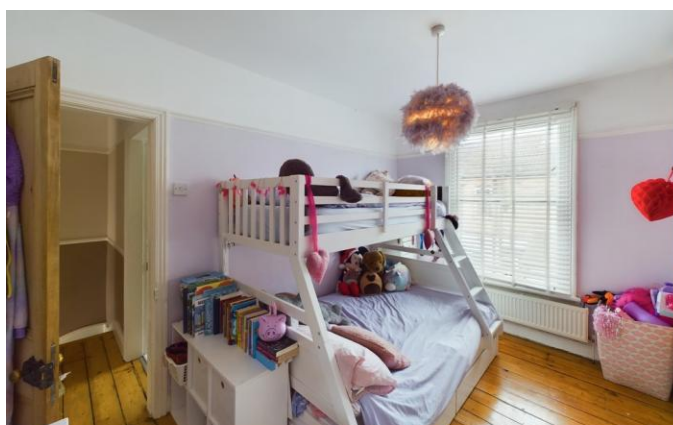
With picture rail and timber floor.

### BEDROOM 1

11' 11" x 11' 6" (3.63m x 3.51m) With a timber floor, radiator and sash window. Cast iron feature fireplace and picture rail.

### BEDROOM 2

10' 0" x 12' 4" (3.05m x 3.76m) With timber floor,



radiator, sash window and picture rail. Fitted cupboard.

### **BEDROOM 3**

5' 11" x 6' 4" (1.8m x 1.93m) With sash window, radiator, timber floor and loft access.

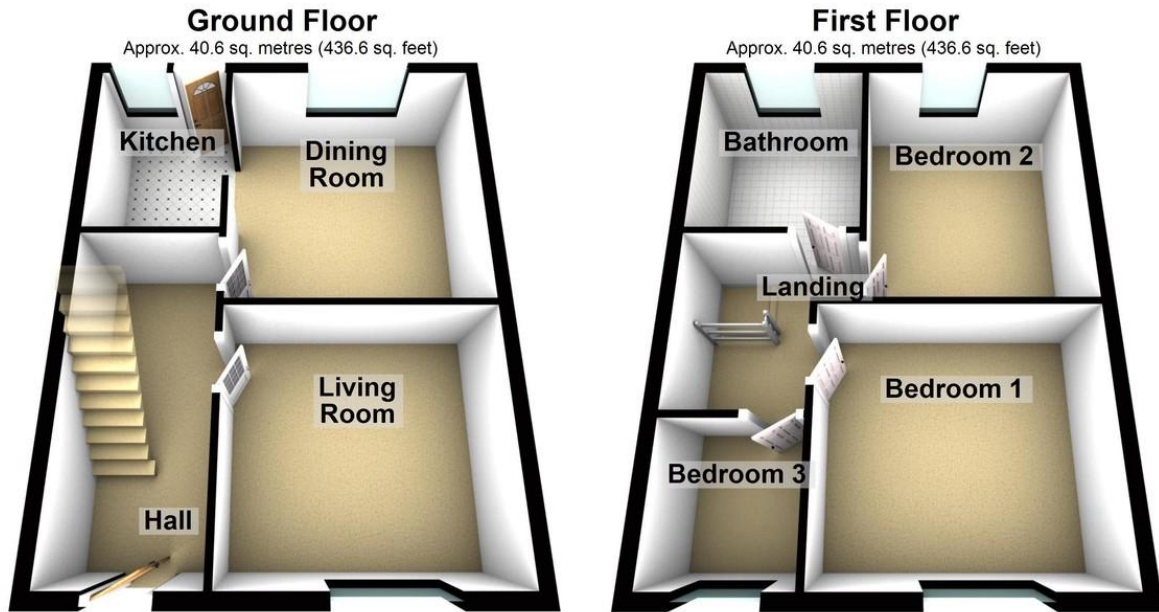
### **BATHROOM**

7' 11" x 9' 1" (2.41m x 2.77m) With a white suite of a WC, wash hand basin on a vanity unit, tiled shower cubicle and bath. Sash window, radiator and recessed spotlights.

### **COURTYARD**

A block paved courtyard with gate to the rear and brick shed.





Total area: approx. 81.1 sq. metres (873.2 sq. feet)

for illustration only not to scale  
Plan produced using PlanUp.

## Tenure

Freehold

## Council Tax Band

B

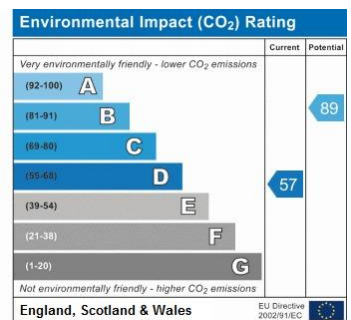
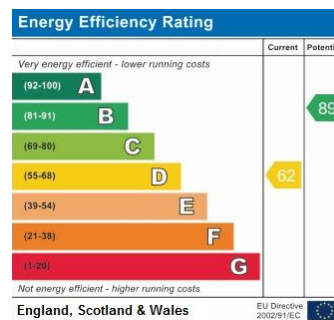
## Viewing Arrangements

If you wish to make an appointment to view this or any other property that we have for offer please call us on 01244 345664

## Contact Details

40 Lower Bridge Street  
Chester  
Cheshire  
CH1 1RS

www.changing-home.co.uk  
jeremy@changing-home.co.uk  
01244 345664



Agents Note: Whilst every care has been taken to prepare these sales particulars, they are for guidance purposes only. All measurements are approximate and for general guidance purposes only and whilst every care has been taken to ensure their accuracy, they should not be relied upon and potential buyers are advised to recheck the measurements