



- Beautiful Modern Family Home
- Cul-de-Sac Location
- Four Bedrooms
- Internal Inspection Strongly Advised



## 57 Laxton Grove, Solihull, West Midlands, B91 2JT

This Beautiful Four Bedroom modern family home enjoys a splendid position tucked away in the cul-de-sac setting within this highly regarded residential development. Handy for Solihull, Shirley and Birmingham the location proves popular due to Strong Rail Links, Local Schooling and the Midlands Motorway Network. Internally the accommodation boasts both Central Heating & Double Glazing, Entrance Hallway, Downstairs WC, Delightful Sitting Room, Modern Fitted Kitchen, Four Family Bedrooms, Master En-Suite, further Family Bathroom, Landscaped Gardens, Garage and Additional Driveway Parking. We strongly advise internal inspection to fully appreciate the level of accommodation on offer. EPC Rating C.



## Property Description

### DETAILS

A modern family home set within a highly regarded residential development briefly affording entrance hall with guest cloakroom, delightful sitting room and modern fitted kitchen. To the first floor there are 4 family bedrooms, master with en-suite facility and further family bathroom.

### OUTSIDE

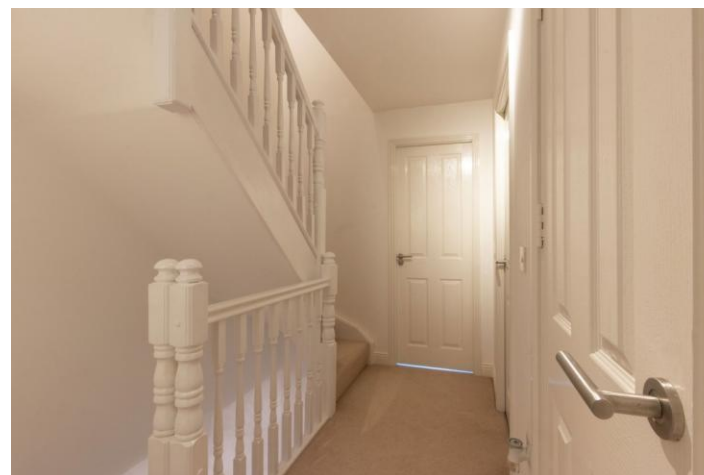
The property has driveway parking leading to a single garage and landscaped gardens to front and rear.

### TENURE

We have been advised that the property is Freehold but you should check this with your legal advisor before exchanging contracts.

### VIEWING

At short notice with DM & Co. Homes on 0121 775 0101 or by email [sales@dmandcohomes.co.uk](mailto:sales@dmandcohomes.co.uk)





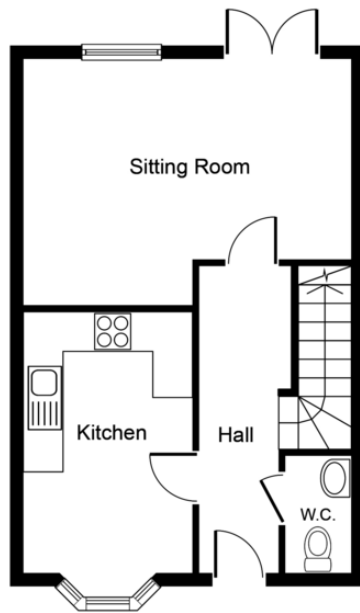


## PROPERTY TO SELL

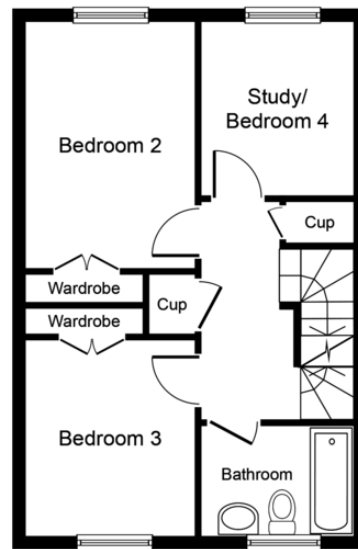
Call DM & Co. Homes on 0121 775 0101 to arrange your FREE no obligation market appraisal and find out why we are Solihull's fastest growing Estate Agency.



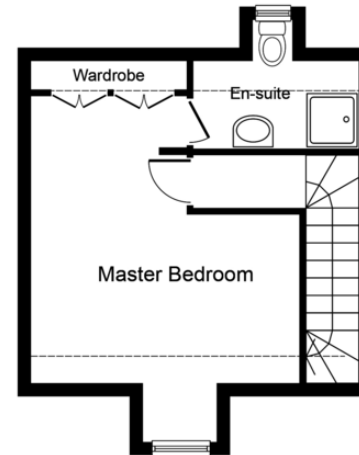
Agents Note: Whilst every care has been taken to prepare these sales particulars, they are for guidance purposes only. All measurements are approximate and are for general guidance purposes only and whilst every care has been taken to ensure their accuracy, they should not be relied upon and potential buyers are advised to recheck the measurements.



Ground Floor



First Floor



Second Floor

Whilst every attempt has been made to ensure the accuracy of the floor plan contained here, measurements of doors, windows, rooms and any other items are approximate and no responsibility is taken for any error, omission, or mis-statement. This plan is for illustrative purposes only and should be used as such by any prospective purchaser or tenant. The services, systems and appliances shown have not been tested and no guarantee as to their operability or efficiency can be given.  
Copyright V360 Ltd 2019 | [www.houseviz.com](http://www.houseviz.com)

