



11 Adelaide Crescent, Hove, East Sussex
Guide price £375,000



middletton
estates



Private Entrance

Living Room
19'8 x 13'3

Kitchen
12'2 x 8'10

Shower Room/WC

Bedroom
13'7 x 11'10

Ensuite Bathroom

Study
10'4 x 9'9

Courtyard One
20'3 x 17'6

Courtyard Two
19'8 x 13'3

IMMACULATELY PRESENTED ONE BEDROOM FLAT IN SOUGHT AFTER LOCATION WITH PRIVATE COURTYARD AND PARKING

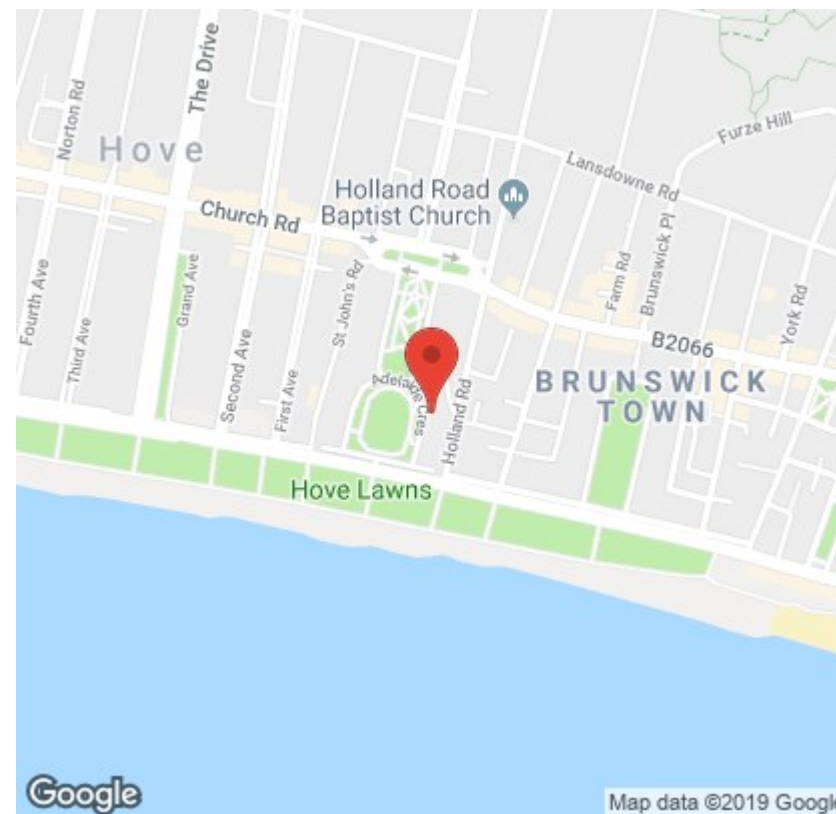
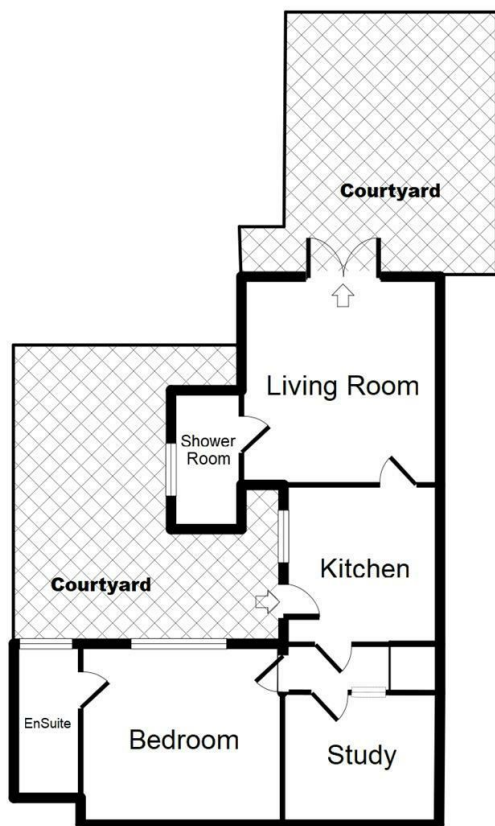
BEDROOM, LIVING ROOM, STUDY/SLEEP SPACE/ EN-SUITE BATHROOM, SHOWER ROOM, KITCHEN, COURTYARD,
PARKING

Middleton Estates are delighted to offer to the market this rarely available two-bedroom lower ground floor flat. Situated just off Hove's iconic lawns and seafront, the property offers off road parking, a spacious living/dining room featuring a beautiful character fireplace also giving access through double doors to a private courtyard, large master bedroom with en-suite bathroom boasting a roll-top bath, study/bedroom 2 which can be used for multiple purposes and a modern shower room. Other benefits include; gas central

heating, walking distance to shopping facilities and transport links The property is decorated neutrally throughout and finished to an immaculate standard meaning you could move straight in. Due to the stunning interior and sought after location of the property, it won't be available for long! Book your appointment to view now to avoid disappointment!

Maintenance - £80 per month includes building insurance.





Energy Efficiency Rating		Environmental Impact (CO ₂) Rating			
	Current	Potential		Current	Potential
Very energy efficient - lower running costs					
(92 plus) A			(92 plus) A		
(81-91) B			(81-91) B		
(69-80) C			(69-80) C		
(55-68) D			(55-68) D		
(39-54) E			(39-54) E		
(21-38) F			(21-38) F		
(1-20) G			(1-20) G		
Not energy efficient - higher running costs					
England & Wales		EU Directive 2002/91/EC	England & Wales		EU Directive 2002/91/EC

"Call us for your free valuation."