

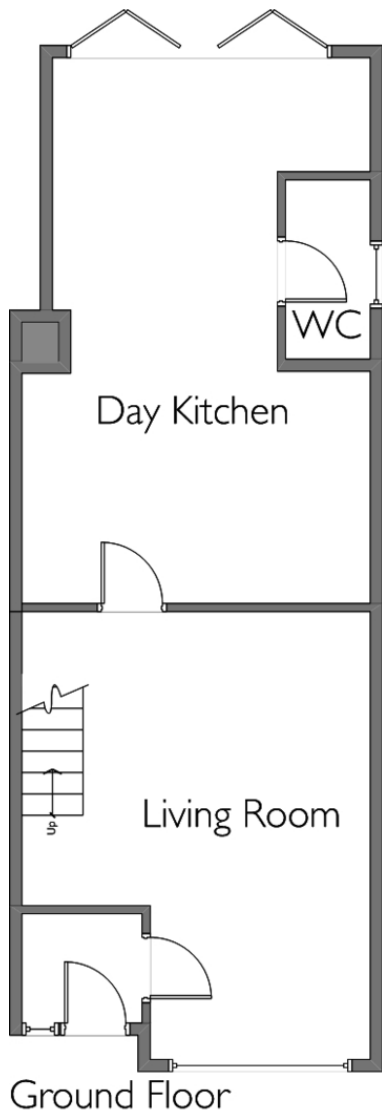


- Close To Underground Station
- Off Street Parking
- Garage
- Bright and modern
- Unfurnished
- End-Terrace House

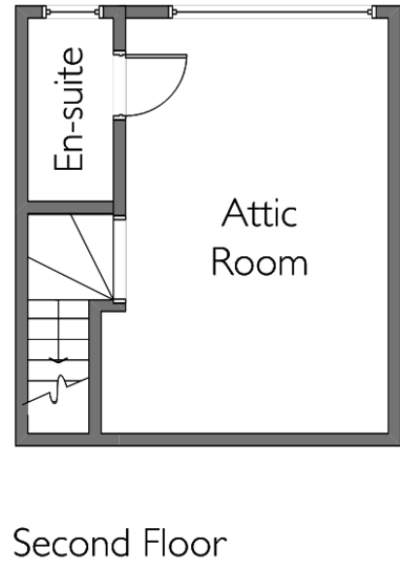
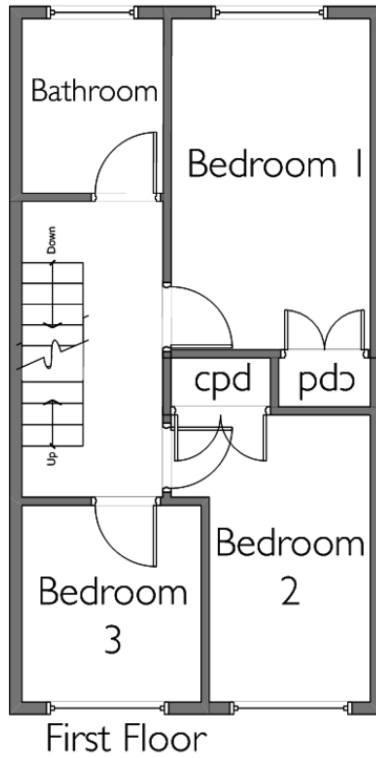
Standing within minutes walking distance of Epping Underground Station and High Street, this end-terrace house comes unfurnished and offers well designed family accommodation including 4 good bedrooms, 1 bathroom and 1 En-suite, spacious living room and an open plan day kitchen with bi-folding doors open to the good size rear garden. Further features include off-street parking for one vehicle, separate garage, gas central heating and double glazing. Fees Apply.

Stevenette

**7 Bower Terrace
Epping, CM16 7AP
£2,300 pcm**



Floorplan Drawn By Stevenette & Company
 Gross Internal Floor Area Approximately:
 1,170 sq.ft./ 108.sq.m.



Energy Efficiency Rating		
	Current	Potential
<i>Very energy efficient - lower running costs</i>		
(92+) A		
(81-91) B		
(69-80) C	71	83
(55-68) D		
(39-54) E		
(21-38) F		
(1-20) G		
<i>Not energy efficient - higher running costs</i>		
England & Wales	EU Directive 2002/91/EC	

WWW.EPC4U.COM

5a Simon Campion Court, 232-234 High Street, Epping, Essex, CM16 4AU
 Tel: 01992 563090
 Email: lettings@stevenette.com

@StevenetteandCoLLP

@StevenetteandCo



Whilst every care has been taken in the preparation of these sales particulars, they are for guidance purposes only and no guarantee can be given as to the working condition of the various services and appliances. Measurements have been taken as accurately as possible but slight discrepancies may inadvertently occur. The agents have not tested appliances or central heating services. Interested applicants are advised to make their own enquiries and investigation before finalising their offer purchase.