



Chelsea Bridge Wharf,  
London, SW11 8NG  
£340,000 Leasehold

GARTONJONES.COM



# Burnelli Building, Chelsea Bridge Wharf, London, SW11 8NG

£340,000 Leasehold



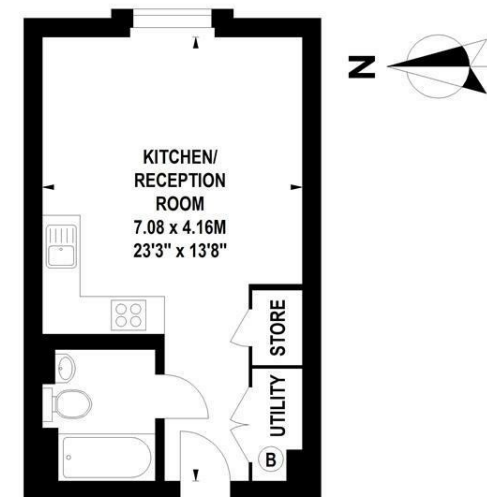
Beautiful studio apartment located on the fifth floor in the Burnelli building at Chelsea Bridge Wharf. Spacious open plan kitchen/living area. Separate beautifully designed bathroom and lots of storage space throughout the apartment.

Chelsea Bridge Wharf is London's most glamorous riverside development located just 0.75 miles from Sloane Square and adjacent to the wide open spaces of Battersea Park and the River Thames. 24 hour concierge service and security service. Secure underground car parking is available at extra cost. It is also immediately next to the exciting Battersea Power Station project and the forthcoming Northern Line Underground extension.

- 323 sq ft.
- 5th Floor (With Lift) Of 11 Floors
- Views Overlooking Battersea Power Station
- Luxury Studio Apartment
- 24h Concierge
- Great Storage

## Burnelli Building, SW11

Approximate Gross Internal Area 30 sq m / 323 sq ft



**Fifth Floor**

Floor Plan produced for Garton Jones by Mays Floorplans © . Tel 020 3397 4594  
Illustration for identification purposes only, not to scale  
All measurements are maximum, and include wardrobes and window bays where applicable