

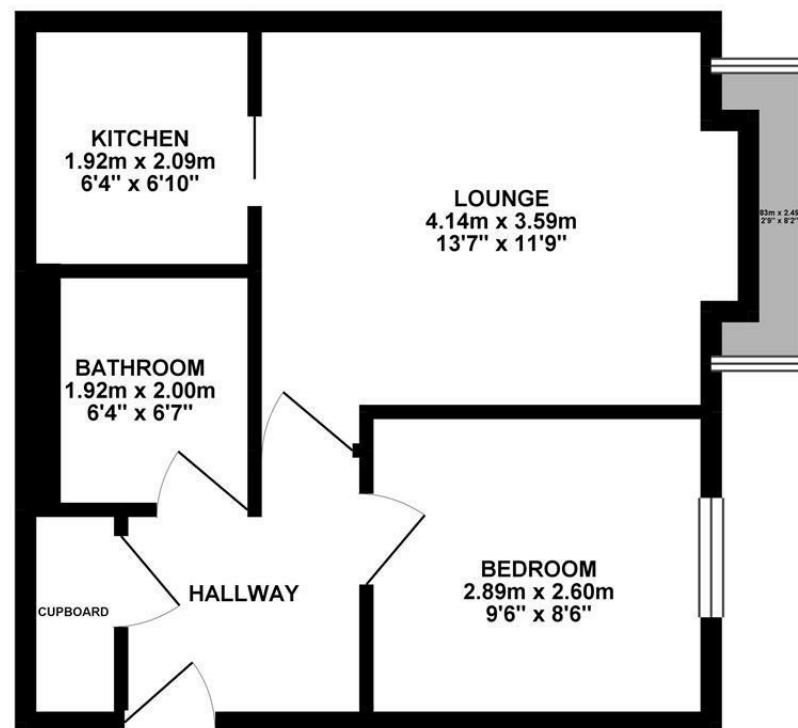
MODERN CITY CENTRE APARTMENT with **ALLOCATED PARKING SPACE & NO ONWARD CHAIN!** This great first floor apartment is situated at The Chare within Newcastle City Centre. The Chare, originally constructed in the 1980's, is tucked just off Leazes Lane and is ideally placed close to the popular Leazes Park and Eldon Square. The apartment is also perfectly placed for convenient access to the RVI and both Universities whilst also giving excellent access to everything that Newcastle City Centre has to offer, including its countless great shops, cafés, bars and restaurants. The apartment also benefits from being placed a short walk from Haymarket Metro Station, providing excellent transport links throughout the region!

The accommodation briefly comprises: communal entrance with secure entry phone system and stairs to the first floor; entrance hall with store cupboard; lounge/diner with bay window over looking the communal gardens with window seat; stylish re-fitted kitchen; bedroom and a refitted bathroom. Well presented throughout, this great purpose built apartment demands an early inspection.

Modern First Floor Apartment | 368.5 Sq ft (34.2m²) | One Bedroom | Lounge/Diner | Stylish Re-Fitted Kitchen | Re-Fitted Bathroom | Excellent Central Location | Secure Entry Phone System | Communal Gardens | Allocated Parking Space | No Onward Chain | EPC Rating: C



GROUND FLOOR 34.24 sq. m.
(368.50 sq. ft.)



TOTAL FLOOR AREA : 34.24 sq. m. (368.50 sq. ft.) approx.

Whilst every attempt has been made to ensure the accuracy of the floorplan contained here, measurements of doors, windows, rooms and any other items are approximate and no responsibility is taken for any error, omission or mis-statement. This plan is for illustrative purposes only and should be used as such by any prospective purchaser. The services, systems and appliances shown have not been tested and no guarantee is given to their operability or efficiency can be given.
Made with Metropix ©2019



Offers Over £120,000

Misrepresentation Act 1967. These particulars and the descriptions and measurements herein do not constitute representation and whilst every effort has been made to ensure accuracy, this cannot be guaranteed.