



Strattondale Street, Strattondale Street

£499,995

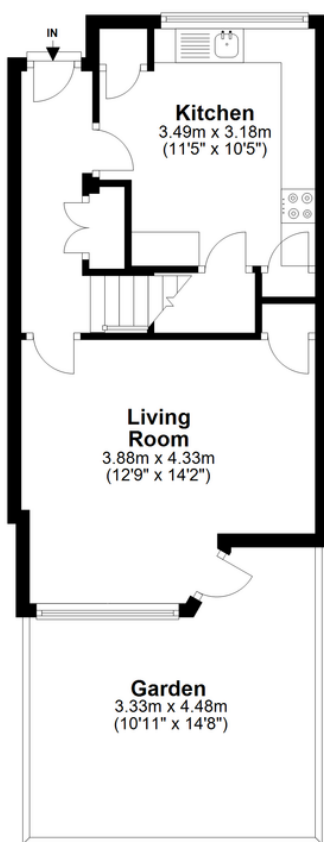
Freehold property ideally in need of modernisation with a small rear and front garden. In close proximity of Cross harbour and South Quay Canary Wharf. Good sized bathroom and kitchen with access to loft space, small back and rear garden with the property overall presenting in good condition.

- Small Garden
- Permit parking
- Bathroom with bath and shower over
- Freehold
- 719 square feet



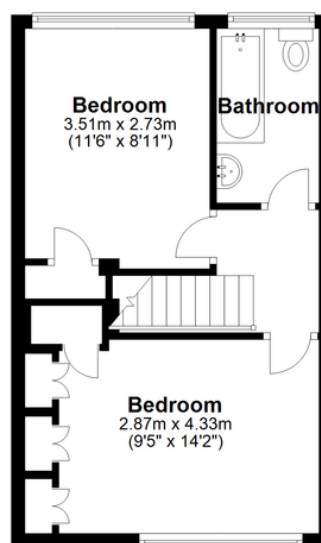
Ground Floor

Approx. 34.0 sq. metres (365.7 sq. feet)



First Floor

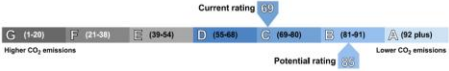
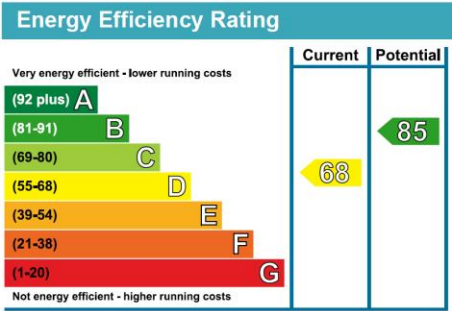
Approx. 32.2 sq. metres (346.2 sq. feet)



Total area: approx. 66.1 sq. metres (711.9 sq. feet)

Whilst every effort has been made to ensure the accuracy of the floor plan contained here, measurements of doors, windows, rooms and any other item are approximate and no responsibility is taken for any error, omission or mis-statement. This Plan is for illustrative purposes only and should be used as such by any prospective purchaser.
Plan produced using PlanUp.





655 Commercial Road, London, E14 7LW

Disclaimer
River Habitat, their clients and any joint agents give notice that: 1. They have no authority to make or give any representations or warranties in relation to the property. These particulars do not form any part of an offer or contract and must not be relied upon as statements or representations of fact. 2. Any areas, measurements or distances are approximate. The text, photographs and plans are for guidance only and are not necessarily a complete representation of the property. Photographs are taken using a wide angle lens camera. 3. It should not be assumed that the property has all necessary planning, building regulations or other consents and River Habitat have not tested any services, equipment or other facilities. Purchasers must satisfy themselves by inspection or otherwise