

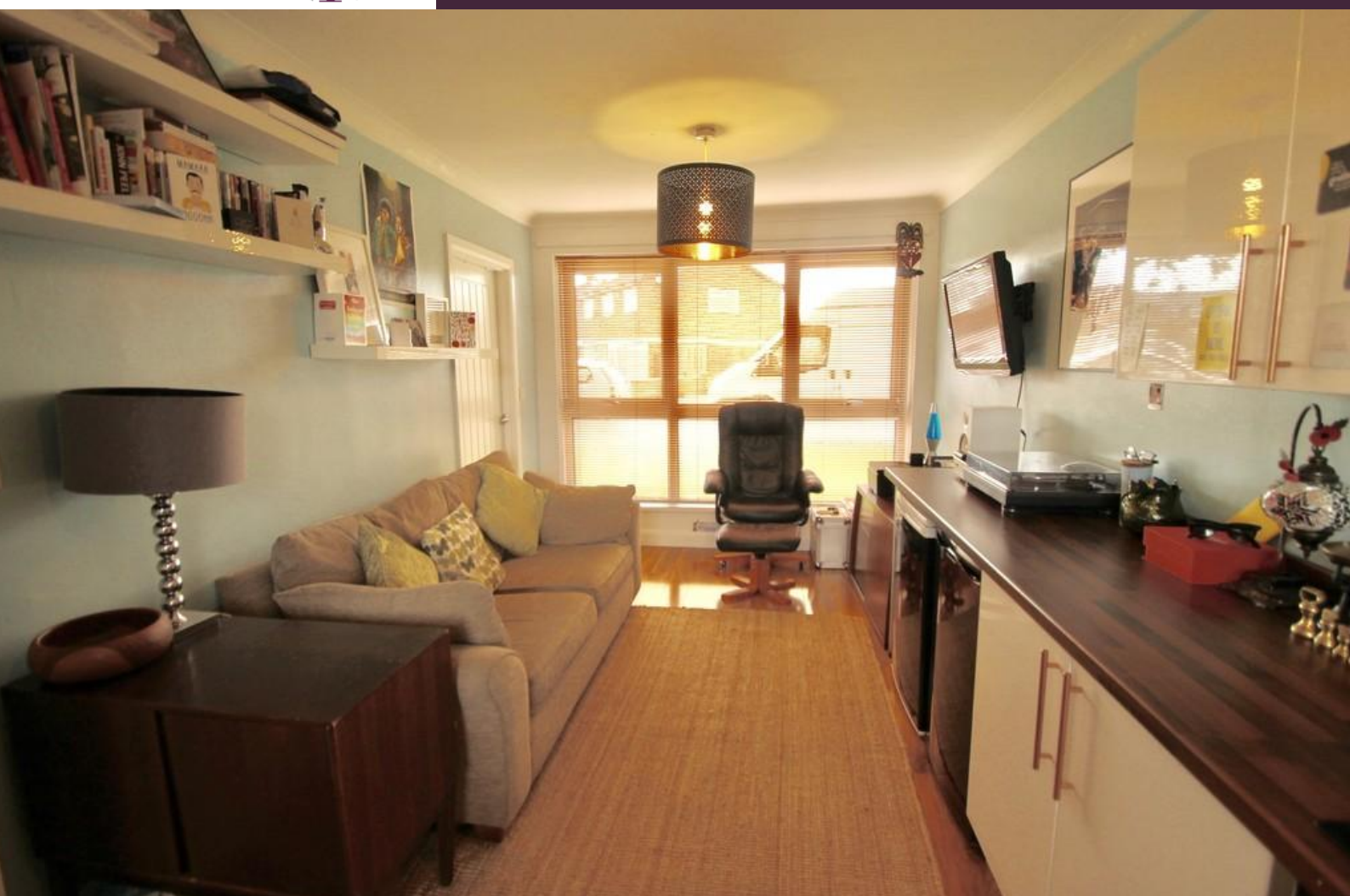


Carouse
Estate Agents



WARDLEY COURT, WARDLEY

£47,500





DESCRIPTION

A lovely ground floor flat located in this pleasant residential area of Wardley. The property has been enhanced with double glazing and has been recently updated by the current owners. Ideal for the single person the property briefly comprises of entrance vestibule, open plan lounge/kitchen with large window allowing plenty of natural light, double bedroom and bathroom with shower. Ideal for a first time buyer or investment.

LOUNGE/DINING ROOM

18' 5" x 9' 6" (5.61m x 2.9m) Large UPVC window allowing plenty of natural light, laminate flooring opening to kitchen.



KITCHEN AREA

12' 2" x 7' 8" (3.71m x 2.34m) Range of white gloss effect wall and floor units with integral stainless steel sink unit, plumbing for automatic washing machine, ceramic hob and electric oven with glass splash back and modern style cooker hood above, space for under bench fridge and freezer, UPVC window over looking the rear elevation.



BEDROOM

12' 2" x 7' 8" (3.71m x 2.34m) Double bedroom, laminate flooring and UPVC window to the front elevation.

BATHROOM

6' 0" x 6' 0" (1.83m x 1.83m) Re-fitted with a modern white suite comprising of panelled bath with electric shower, vanity sink unit, low level w.c, tiling to the walls and UPVC window.

EXTERNAL

There are communal maintained gardens to the front and rear.

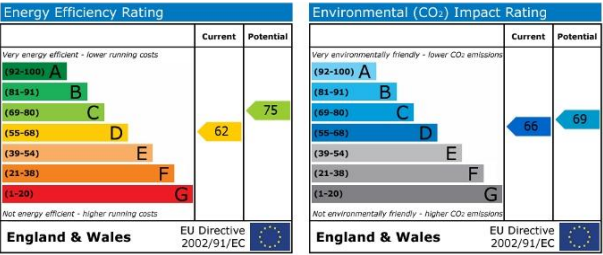
DISCLAIMER

The particulars on these properties are set out as a general guidance for intended purchasers or tenants, and do not constitute part of an offer or contract. The Agent has not tested any apparatus, equipment, fixtures and fittings or services and so cannot verify that they are in working order or fit for the purpose. A Buyer is advised to obtain verification from their Solicitor or Surveyor. References to the Tenure of a





Property are based on information supplied by the Seller. The Agent has not had sight of the title documents. A Buyer is advised to obtain verification from their Solicitor. All dimensions, descriptions and distances, reference to condition and necessary permissions for use and occupation, and other details are given without responsibility. Any intending purchasers or tenants should not rely on them as statements of fact, but must satisfy themselves by inspection or otherwise as to the correctness of each of them. Items shown in photographs are NOT included unless specifically mentioned within the sales particulars. They may however be available by separate negotiation. Measurements have been taken using a laser distance meter and may be subject to a margin of error. For further information see the Consumer Protection from Unfair Trading Regulations.



Agents Note: Whilst every care has been taken to prepare these sales particulars, they are for guidance purposes only. All measurements are approximate are for general guidance purposes only and whilst every care has been taken to ensure their accuracy, they should not be relied upon and potential buyers are advised to recheck the measurements

