



Crossway Stoke Newington, London N16

NEXT MOVE
PROPERTY AGENTS

Crossway

Stoke Newington

London N16

Stunning newly-built luxury three bedroom house offering stylish contemporary living on the N16/E8/N1 borders.

DESCRIPTION

Beautifully appointed throughout, featuring an energy efficient under floor heating system, Luna Stone Quartz worktops and quality appliances including an AEG oven and hob. The property comes with a 10 year BLP Structural Warranty.

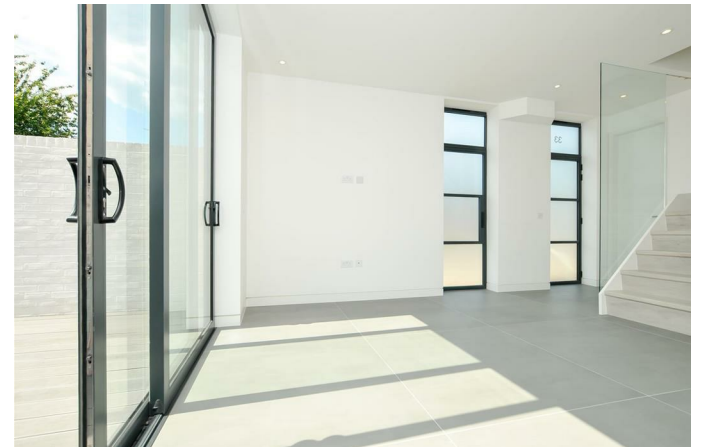
Bathed in light and set over two spacious floors the property comprises three double bedrooms, luxury bathroom, guest cloakroom and generous open-plan living and entertaining space with smart kitchen and secluded patio garden.

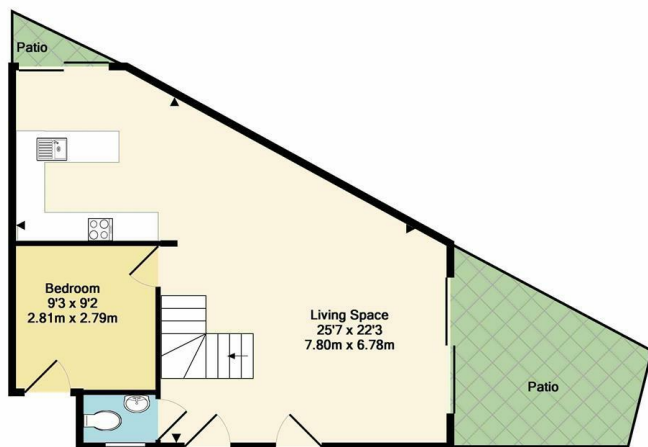
Occupying a fantastic central position moments from excellent shopping on Kingsland Road and just a short walk from Stoke Newington. A host of transport links to The City and West End include Dalston Kingsland and Dalston Junction Overground Stations.

Freehold

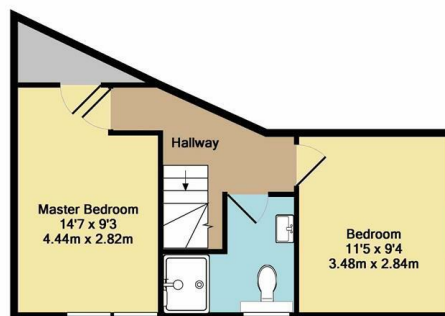
£825,000







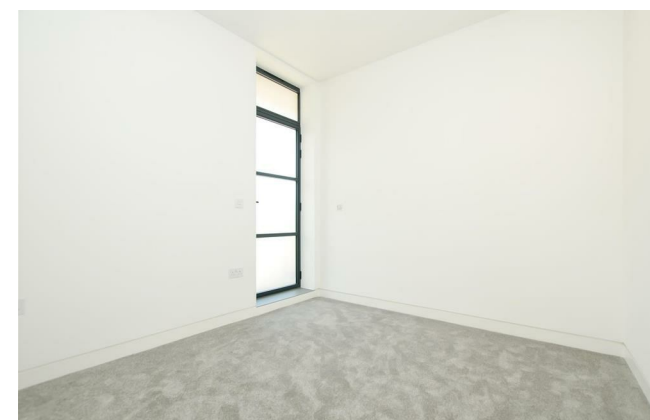
Ground Floor
Approx. Floor
Area 534 Sq.Ft.
(49.7 Sq.M.)



1st Floor
Approx. Floor
Area 378 Sq.Ft.
(35.1 Sq.M.)

Total Approx. Floor Area 913 Sq.Ft. (84.8 Sq.M.)

Illustration for identification purposes. Not to scale. All measurements are approximate and for guidance only. © Next Move 2019
Made with Metropix ©2019



Energy Efficiency Rating		
	Current	Potential
Very energy efficient - lower running costs		
(92 plus) A		
(81-91) B		
(69-80) C		
(55-68) D		
(39-54) E		
(21-38) F		
(1-20) G		
Not energy efficient - higher running costs		
EU Directive 2002/91/EC		
England & Wales		

Environmental Impact (CO ₂) Rating		
	Current	Potential
Very environmentally friendly - lower CO ₂ emissions		
(92 plus) A		
(81-91) B		
(69-80) C		
(55-68) D		
(39-54) E		
(21-38) F		
(1-20) G		
Not environmentally friendly - higher CO ₂ emissions		
EU Directive 2002/91/EC		
England & Wales		

NEXT MOVE
PROPERTY AGENTS

www.nextmove.com

Islington
n1@nextmove.com
020 7226 5050

320 Upper Street,
London N1 2XQ

Stoke Newington
n16@nextmove.com
020 7254 9709

63-65 Stoke Newington Church Street,
London N16 0AR

Clapton
e5@nextmove.com
020 8525 0222

70-72 Chatsworth Road,
London E5 0LS