



jordanfishwick

MANCHESTER
6 Leftbank



6 Leftbank, Manchester
M3 3AE
 Price £575,000



The Property

With 1474 sq ft of living space, this eighth floor apartment within Manchester's most prestigious development, is perfect for those individuals wanting the ultimate in city centre living. The apartment benefits from a dual aspect position with views over Spinningfields from both bedrooms and views over the River Irwell from the spacious open plan living/dining area. The apartment boasts balconies on both aspects of the apartment which can be accessed by bi-fold concertina windows. Accommodation comprises of spacious entrance hallway with ample storage, double doors leading to an extensive open plan living room with modern fully fitted kitchen off boasting a range of integrated appliances. Both bedrooms are generous size doubles both with built in

wardrobes and the master benefiting from an en suite shower room. There is an additional shower room off the hallway and there is comfort cooling in the living room and master bedroom. Externally the property comes with an allocated underground allocated parking space and the development has

Directions

Spinningfields is a vibrant area with an array of Designer shops, bars and restaurants on your doorstep. Its within short walking distance to Deansgate and provides easy access to the Ring Road.



- Spectacular Apartment
- Dual Aspect
- 1474 Sq Ft
- Two Double Bedrooms
- Two Bathrooms
- Immaculate Condition
- Two Balconies
- No Chain
- 24 Hour Concierge
- Secure Allocated Parking Space

Postcode - M3 3AE

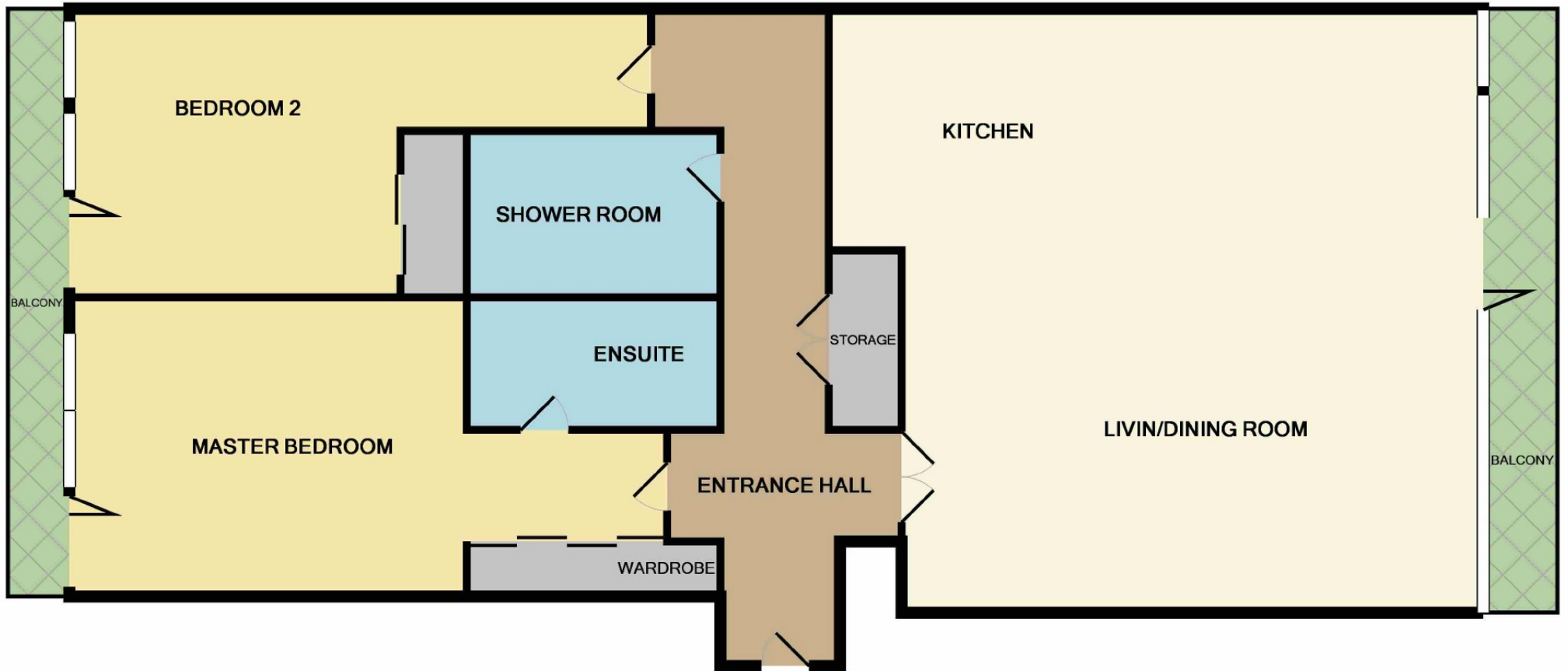
EPC Rating - D

Floor Area - 1474 sq ft

Local Authority -

Council Tax - Band F





Measurements are approximate. Not to scale. Illustrative purposes only
Made with Metropix ©2019