



Green Park Road, Northfield, Birmingham, B31 5BD | £169,995
Two Bedroom Semi-Detached House



Features:

- Two Double Bedrooms
- Main Bathroom
- Lounge/Diner
- Kitchen
- Rear Garden
-

Summary:

A well presented two double bedroom semi-detached house, offered with an open plan lounge/diner/kitchen and rear garden, situated in Northfield, Birmingham.

Description:

The accommodation, in brief, features:- Hall, Lounge/Diner with Feature Fireplace, Bay Window and Door to Rear Garden, Open Plan to Kitchen with Integrated Oven, Gas Hob and Extractor, Stairs to First Floor Landing, Master Bedroom with Bay Window, Double Bedroom Two and Main Bathroom.

Outside:

Outside, the property enjoys a side garden laid to bark chippings and rear garden with paved patio, lawn and planted borders to fenced boundaries.

Location:

Northfield is a vibrant town offering a number of shopping and eating facilities, plus easy access for commuters into Birmingham City Centre via Northfield Train Station. No more than 1.5 miles away (a 15-20 minute walk) is also Longbridge Train Station and the recently regenerated Longbridge Town Centre Development (former MG Rover car plant), home to the largest Marks and Spencers in the Midlands.

Room Dimensions:**Hall****Lounge/Diner:**

21' 8" x 9' 11" (6.62m x 3.03m) max



Kitchen:

7' 2" x 12' 6" (2.19m x 3.82m) max

Stairs To First Floor Landing

Master Bedroom:

12' 4" x 12' 11" (3.77m x 3.95m) max

Bedroom Two:

8' 4" x 9' 10" (2.56m x 3.02m)

Bathroom:

5' 7" x 5' 3" (1.71m x 1.61m)

EPC: E

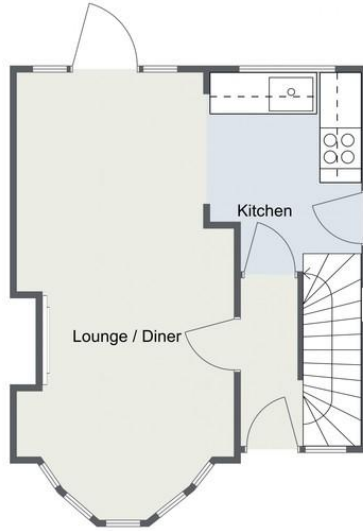
Council Tax Band: B

Tenure: Freehold

For more information on Green Park Road or to arrange a viewing, please call the Rubery Office on 0121 453 4349



Green Park Road, Northfield
Ground Floor



Green Park Road, Northfield

Ground Floor



First Floor



Total Area Approx :
54.9 sq metres
(590.9 sq ft)

For illustrative purposes only. Decorative finishes, fixtures & fittings do not represent the current state of the property. Measurements are approximate & not to scale. Floor Plans made using RoomSketcher.

First Floor



Total Area Approx :
54.9 sq metres
(590.9 sq ft)

For illustrative purposes only. Decorative finishes, fixtures & fittings do not represent the current state of the property. Measurements are approximate & not to scale. Floor Plans made using RoomSketcher.

Please read the following: These particulars are for general guidance only and are based on information supplied and approved by the seller. Complete accuracy cannot be guaranteed and may be subject to errors and/or omissions. They do not constitute a contract or part of a contract in any way. We are not surveyors or conveyancing experts therefore we cannot and do not comment on the condition, issues relating to title or other legal issues that may affect this property. Interested parties should employ their own professionals to make enquiries before carrying out any transactional decisions. Photographs are provided for illustrative purposes only and the items shown in these are not necessarily included in the sale, unless specifically stated. The mention of any fixtures, fittings and/or appliances does not imply that they are in full efficient working order and they have not been tested. All dimensions are approximate. We are not liable for any loss arising from the use of these details.