



27 Westbourne Terrace

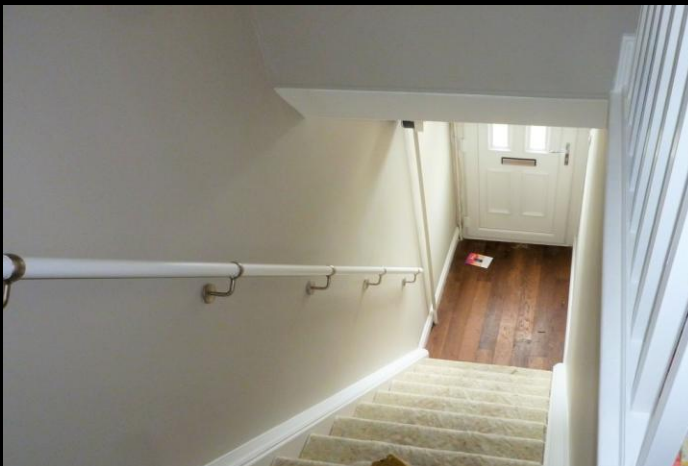
Seaton Delaval, NE25 0BE

£450 pcm

- ◆ First Floor Flat
- ◆ Two Bedrooms
- ◆ Lounge
- ◆ Kitchen And Storage Area
- ◆ Bathroom/Wc
- ◆ Available Immediately
- ◆ Luxury Bathroom
- ◆ Well Presented
- ◆ Zero Deposit Available
- ◆ Private Rear Yard



27 Westbourne Terrace, Seaton Delaval, Tyne & Wear, NE25 0BE



Property Description

We are pleased to welcome to the rental market this delightful two bedroom first floor flat situated on the outskirts of Seaton Delaval. The property is well presented throughout and available immediately. Briefly comprising: Lounge, two bedrooms, kitchen, luxury bathroom/wc and a private rear yard.

ACCOMMODATION

UPVC double glazed entrance door leading to...

ENTRANCE HALLWAY

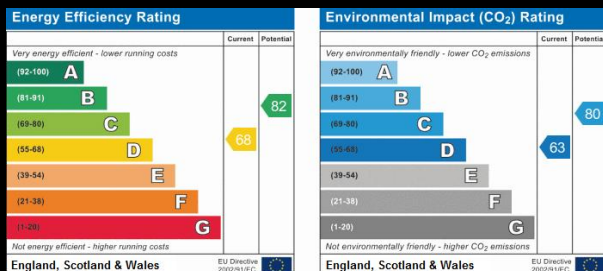
Staircase to first floor, dark wood flooring.

FIRST FLOOR LANDING

Doors to the following rooms.

LOUNGE

12' 11" x 12' 2" (3.94m x 3.71m) UPVC double glazed window to the rear elevation with pleasant outlook, central heating radiator, carpet flooring, electric fire, access to kitchen.



KITCHEN

2.36m(7'9") x 2.24m(7'4") UPVC double glazed windows to the side elevation, grey gloss wall and floor units with roll top worksurfaces, stainless steel sink unit with mixer tap, wall mounted central heating boiler, electric oven, extractor hood, red brick effect splash backs, tiled effect vinyl flooring, UPVC double glazed door to the rear yard, central heating radiator.

BATHROOM

8' 4" x 7' 9" (2.54m x 2.36m) UPVC Double glazed window to the rear elevation, White suite comprising panelled bath with electric shower over, glass shower screen and mixer taps, wash hand basin and low level WC, grey tiled splash backs, ladder style radiator, spotlights to ceiling.

BEDROOM 1

14' 8" x 13' 0" (4.47m x 3.96m) UPVC double glazed bay window to the front elevation, central heating radiator, carpeted flooring.

BEDROOM 2

8' 1" x 7' 9" (2.46m x 2.36m) UPVC double glazed window to the front elevation, central heating radiator.

EXTERNALLY

There is a private rear yard.

A PROPERTY TO LET?

IF YOU ARE THINKING OF MOVING TO A NEW HOUSE IN THE AREA OR ARE CURRENTLY ON THE MARKET WITH ANOTHER AGENT AND ARE NOT RECEIVING THE RESULTS YOU WISH, WE WOULD BE HAPPY TO CARRY OUT A FREE VALUATION AND ADVISE ON MARKETING WITHOUT OBLIGATION. PLEASE GIVE US A CALL ON 0191 237 6060.

OFFICE HOURS:

Monday - Friday 9:00a m - 5:30pm
Saturday 9:30a m - 3:00pm

We are contactable after hours on our social media pages and via email sd@mlestates.co.uk

VIEWING: Viewing is strictly by appointment through: - ML Estates, 27 Avenue Road, Seaton Delaval, Tyne & Wear, NE25 0DT

**27 Avenue Road
Seaton Delaval
Tyne & Wear
NE25 0DT**

Agents Note: Whilst every care has been taken to prepare these sales particulars, they are for guidance purposes only. All measurements are approximate and are for general guidance purposes only and whilst every care has been taken to ensure their accuracy, they should not be relied upon and potential buyers are advised to recheck measurements.

**www.mlestates.co.uk
lettings@mlestates.co.uk
0191 237 6060**