



41 High Lane, Ridgeway, Sheffield, South Yorkshire, S12 3XF
£850,000

REDBRIK 
ESTATE AGENTS





Situated in the sought after village of Ridgeway is this beautifully presented five bedroom detached house.

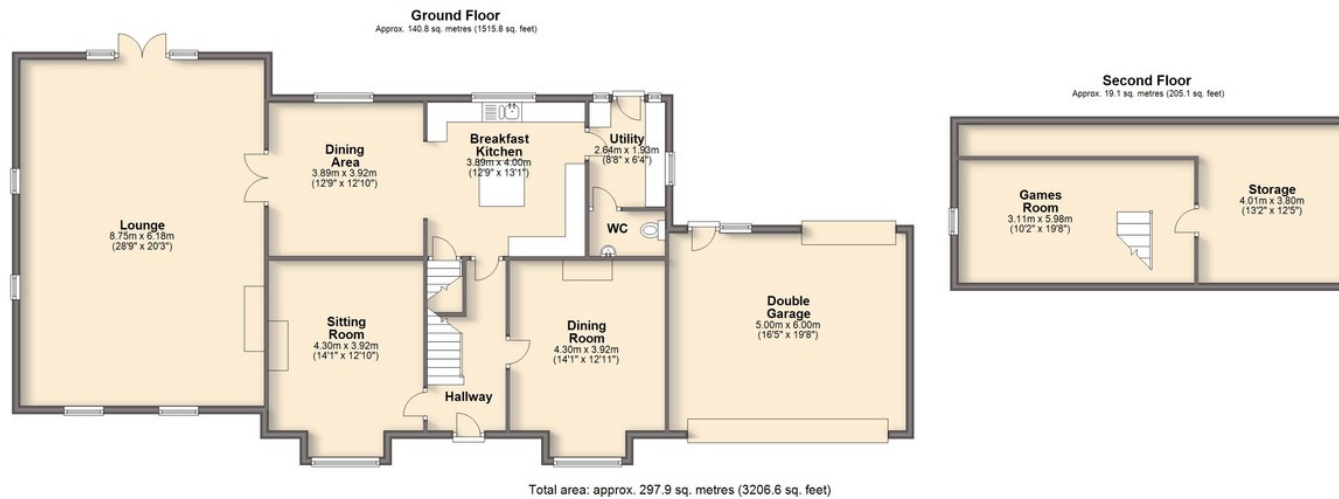
The stone built property occupies a plot of almost 2 acres, comprised of stunning landscaped grounds, ornamental gardens and pond, an allotment and field to the rear.

The property itself provides 3206.6 sq. ft. of flexible accommodation set across four levels and would make a fabulous family home. With substantial living & dining space on the ground floor, generous bedrooms throughout including a master with en suite & dressing room and a second floor games room.

There are also substantial cellars (450 sq.ft.) under the original house which provide extensive storage and an attached garage (300 sq.ft.)

Well placed for local shops/amenities and transport links.

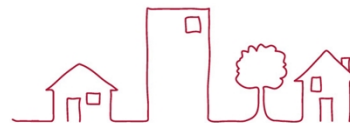






- Five Bedroom Detached House
- Almost 2 Acre Plot Including Field Beyond Garden
- Three Reception Rooms, Second Floor Games Room
- Open Plan Breakfast Kitchen/Dining Room With Integrated Appliances
- Generous Lounge With Access To Garden
- Master Bedroom With Dressing Room & En Suite
- Three Further Double Bedrooms, One Single Bedroom
- Family Bathroom With Four Piece Suite
- Landscaped Gardens, Allotment, Ornamental Pond, Double Garage/Driveway
- Energy Rating - F, GCH, uPVC DG, Utility, GF W.C., Cellar Space

We endeavor to make these particulars as accurate as possible, but they should only be used as guidance and they do not constitute any part of the contract. All measurements are approximate and no guarantees are made to the services, heating systems, appliances (if any) or fittings as to their working order and no warranty can be given or implied.



SALES:

CHESTERFIELD T: 01246 563 060
MILLHOUSES T: 0114 399 0567
CRYSTAL PEAKS T: 0114 361 1000

LETTINGS:

SHEFFIELD T: 0114 361 0140
CHESTERFIELD T: 01246 380 414
KELHAM ISLAND T: 0114 361 0140

E: sales@redbrik.co.uk www.redbrik.co.uk

