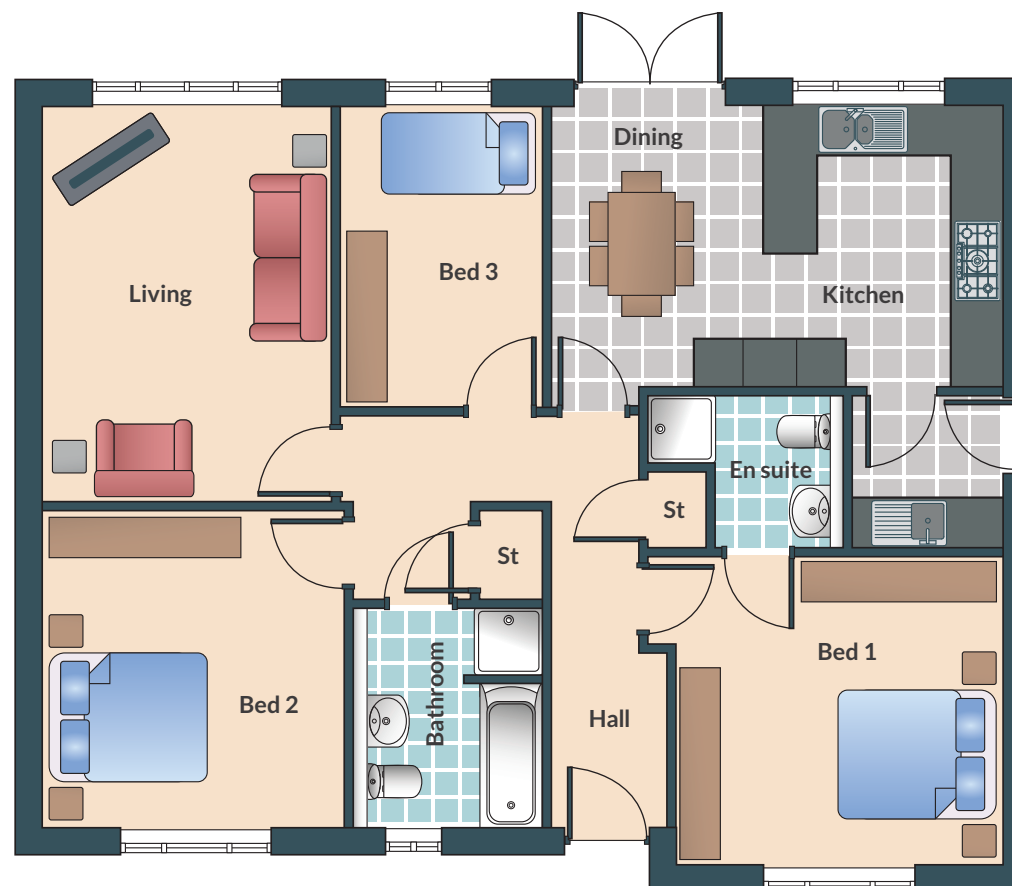


The Claydon | 3 Bedroomed Bungalow



This highly desirable and luxury detached three bedroom bungalow offers generously proportioned accommodation for modern single storey living. The Claydon boasts landscaped gardens, patio area, block paved driveway and a detached double or single garage.

The large open plan kitchen/dining area features designer units set beneath beautiful quartz work surfaces incorporating an inset 1.5 bowl stainless steel sink. A range of built in appliances including double oven, microwave, stylish gas or induction hob with extractor canopy over, fridge freezer and dishwasher are included as standard. The Claydon also has an en-suite shower room and luxurious family bathroom with a separate shower and fitted with contemporary suites and tiles.



Living	4680mm x 3390mm	15'4" x 11'1"
Kitchen / Dining	5320mm x 3320mm	17'5" x 10'11"
Utility	1760mm x 1750mm	5'9" x 5'9"
Bathroom	2570mm x 2190mm	8'5" x 7'2"

Bedroom 1	3830mm x 3630mm	12'6" x 11'11"
En suite	1480mm x 1740mm	4' 10" x 5' 9"
Bedroom 2	3720mm x 3550mm	12'2" x 11'8"
Bedroom 3	3540mm x 2350mm	11'7" x 7'9"



To make an appointment with our sales representative:

Tel: 01246 57 57 44 • Email: sales@woodallhomes.co.uk

www.woodallhomes.co.uk



Please Note: Wall and roof finishes vary, refer to finishes schedule. Handing may vary and some plots have detached single garage. Refer to site plan and finishes schedule. All images are for illustrative purposes and should be treated as guidance only.