



Quadrant Estate Agents

£290,000



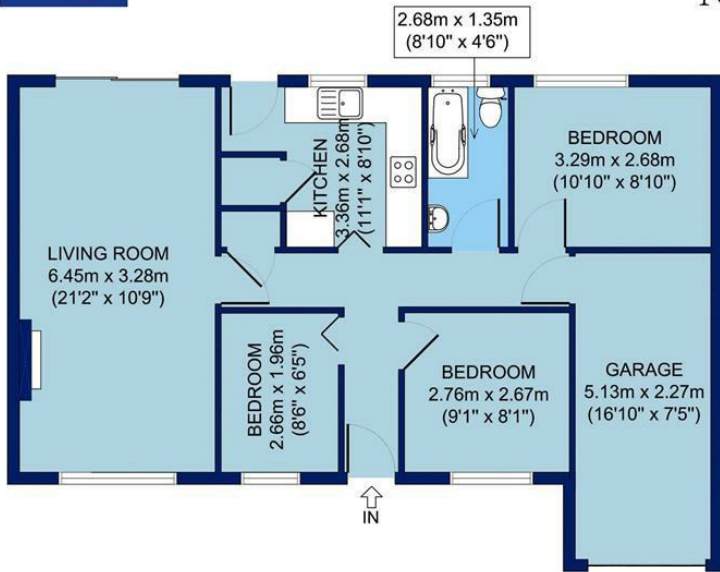
## 25, Whitley Crescent

Bicester, OX26 4XP

Set in a popular location, this spacious detached bungalow boasts a generous garden with rare degree of privacy. Benefiting from three bedrooms, living/dining room, kitchen, family bathroom, single garage and driveway parking.

[www.quadrant-estates.co.uk](http://www.quadrant-estates.co.uk)





APPROX. GROSS INTERNAL FLOOR AREA 829 SQ FT / 77 SQ M  
25 WHITLEY CRESCENT

All measurements of walls, doors, windows, fittings and appliances, including their size and location, are shown as standard sizes and therefore cannot be regarded as a representation by the seller.

## ACCOMMODATION

- Detached Bungalow
- Three Bedroom
- Kitchen
- Living/Dining Room
- Family Bathroom
- Private Garden
- Single Garage
- Driveway Parking



Quadrant Estate Agents

10Market Square, Bicester, Oxfordshire, OX26 6AD

t 01869 241166

sales@quadrant-estates.co.uk

[www.quadrant-estates.co.uk](http://www.quadrant-estates.co.uk)

IMPORTANT: we would like to inform prospective purchasers that these sales particulars have been prepared as a general guide only. A detailed survey has not been carried out, nor the services, appliances and fittings tested. Room sizes should not be relied upon for furnishing purposes and are approximate. If floor plans are included, they are for guidance only and illustration purposes only and may not be to scale. If there are any important matters likely to affect your decision to buy, please contact us before viewing the property.