

Ascend

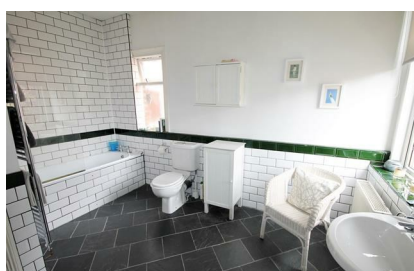
Built on higher standards



55 Clifton Road Monton M30 9QS

- Bay-fronted terrace
- Large bathroom
- Two double bedrooms
- No onward chain
- Great transport links
- Period features throughout
- Two reception rooms
- Monton Village location
- Cellar
- Access to local amenities

£270,000

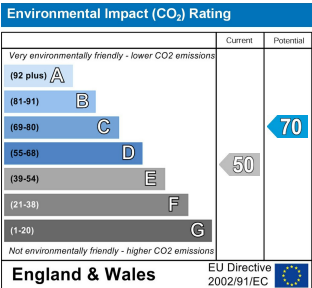
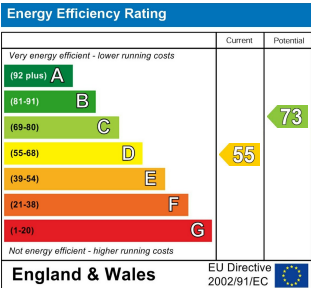
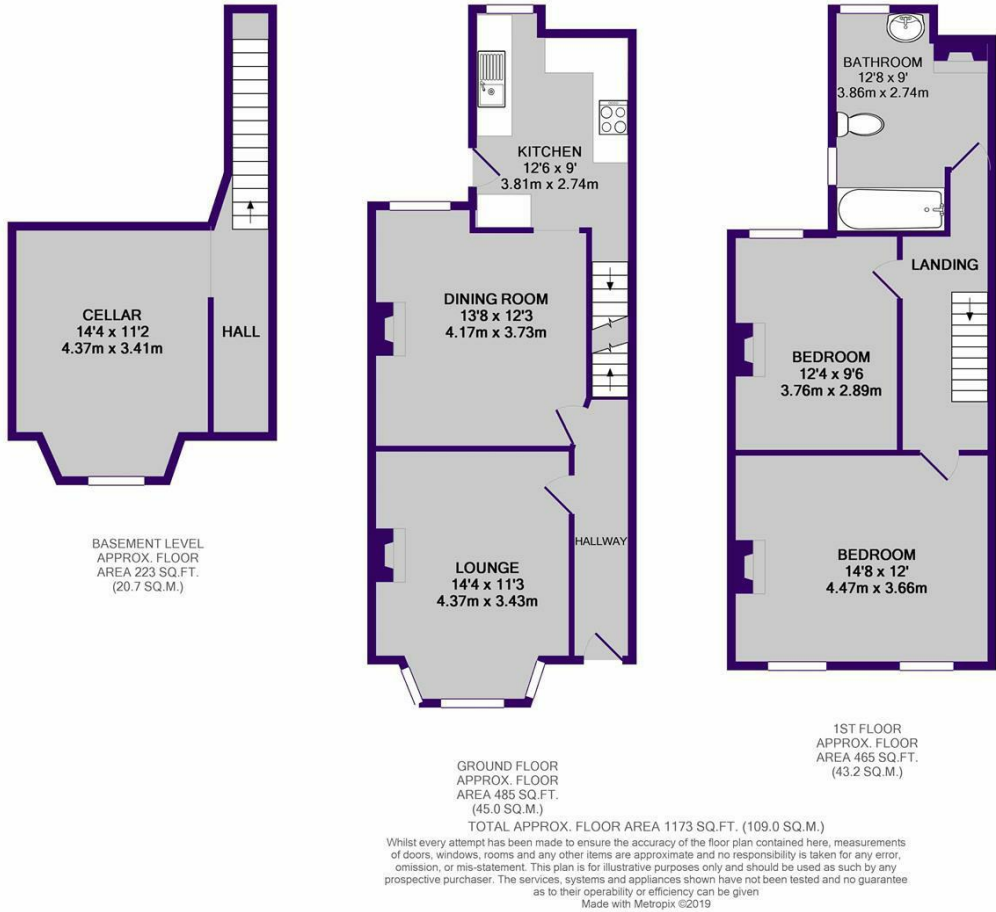


Beautiful bay-fronted terrace situated just minutes walk from Monton Village. This spacious property has been modernised throughout and displays an abundance of period features including high ceilings, original sash windows and a fireplace in nearly every room!

To the ground floor there is a bay-fronted lounge with fitted units, a second large reception room ideal for dining and modern fitted kitchen which provides access to the cellar as well as the rear garden. To the first floor there are two large double bedrooms, both with fitted wardrobes and a beautifully tiled bathroom with original cast iron fireplace.

Not only are you within walking distance of some great local restaurants, bars and shops, you're also close to all major transport links such as train, tram and bus as well as the motorway network providing easy access to MediaCityUK, Manchester City Centre and Intu Trafford Centre. There are also some excellent local schools on your doorstep making this home ideal for a family too.

For further information or to book an appointment to view please contact the office 0161 707 7584. Images are for marketing purposes only.



Ascend

Built on higher standards

0161 707 7584

192 Monton Road, Monton, Manchester, M30 9PY

monton.sales@ascendproperties.com,
monton.lettings@ascendproperties.com
www.ascendproperties.com