

jordan fishwick

Estate Agents, Lettings and Management



Apt 1, 33 Duke Street, Salford, M7 1PR

Price £115,000

INVESTORS ONLY! TENANTED UNTIL APRIL 2020 ACHIEVING £600 PCM

This two bedroom ground floor apartment is located a short distance from the city centre and offers gated car parking and very convenient access to the City Centre and surrounding areas for an affordable price. The apartment has entrance hallway with storage and washer/dryer, spacious living room with fitted kitchen incorporating fridge/freezer, oven, hob and extractor. Master bedroom with en-suite shower room. second

Entrance Hall

Carpet electric wall mounted heater, storage cupboard housing the washing machine and the combi boiler.

Living/Kitchen 3.04m x 5.78m (10'0" x 19'0")

The lounge has a Juliette balcony to the front aspect laminate flooring wall, radiator. The kitchen has a mix of wall and base units with complimentary work surfaces and integral appliances, Electric hob and oven with extractor over, steel splash back and lino flooring.

Bedroom One 3.04m x 3.04m (10'0" x 10'0")

UPVC double glazed window to the front aspect, radiator, access to the en-suite.

En-Suite

Three piece white suite comprising of low

level WC, hand wash basin and shower cubical with electric shower. Tiled walls and extractor fan, lino flooring

Bedroom Two 2.43m x 3.04m (8'0" x 10'0")

UPVC double glazed window to the front aspect, electric wall mounted heater, access to the en-suite.

Bathroom

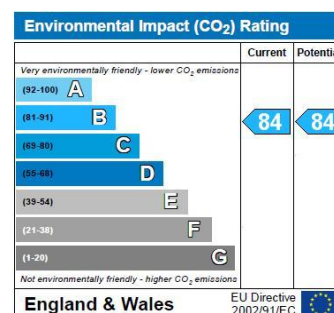
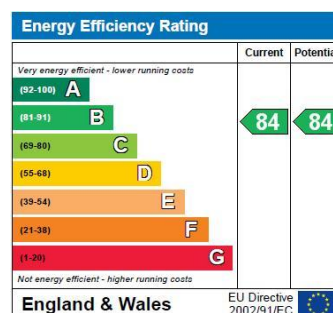
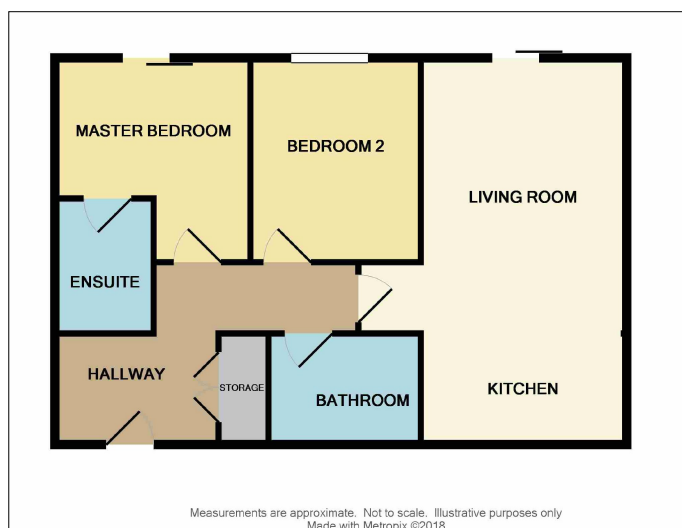
Three piece white suite comprising of low level WC, paneled bath with mixer tap and hand wash basin. Lino flooring chrome heated towel rail.

Externally

There is a parked space to the rear of the property

Additional Information

Service Charge: £117 PCM
Ground Rent: £100 Per Annum
Lease: 250 years from 2007



Manchester Office - 68 The Arches, Whitworth Street West, Manchester, M1 5WQ

Salford Office - City Point, Unit 2, 156 Chapel Street, Salford, M3 6BF

Northern Quarter Office - 45 Tib Street, Manchester, M4 1LT

Sales: (0161) 833 9499 option 3 **Lettings:** (0161) 833 9499 option 2 **Fax:** (0161) 833 9498

Email: manchester@jordanfishwick.co.uk **Email:** northernquarter@jordanfishwick.co.uk **Web:** www.jordanfishwick.co.uk

DIDSBURY Tel: 0161 445 4480

HALE Tel: 0161 929 9797

CHORLTON Tel: 0161 860 4444

WILMSLOW Tel: 01625 532 000

SALE Tel: 0161 962 2828

MACCLESFIELD Tel: 01625 434 000

GLOSSOP Tel: 01457 858 888



These Particulars are believed to be accurate but they are not guaranteed and do not form a contract. Floor plans are for guidance only and cannot be taken as being to scale. Neither Jordan Fishwick nor the vendor or lessor accept any responsibility in respect of these particulars, which are not intended to be statements or representations of fact and any intending purchaser or lessee must satisfy himself by inspection or otherwise as to the correctness of each of the statements contained in these particulars