

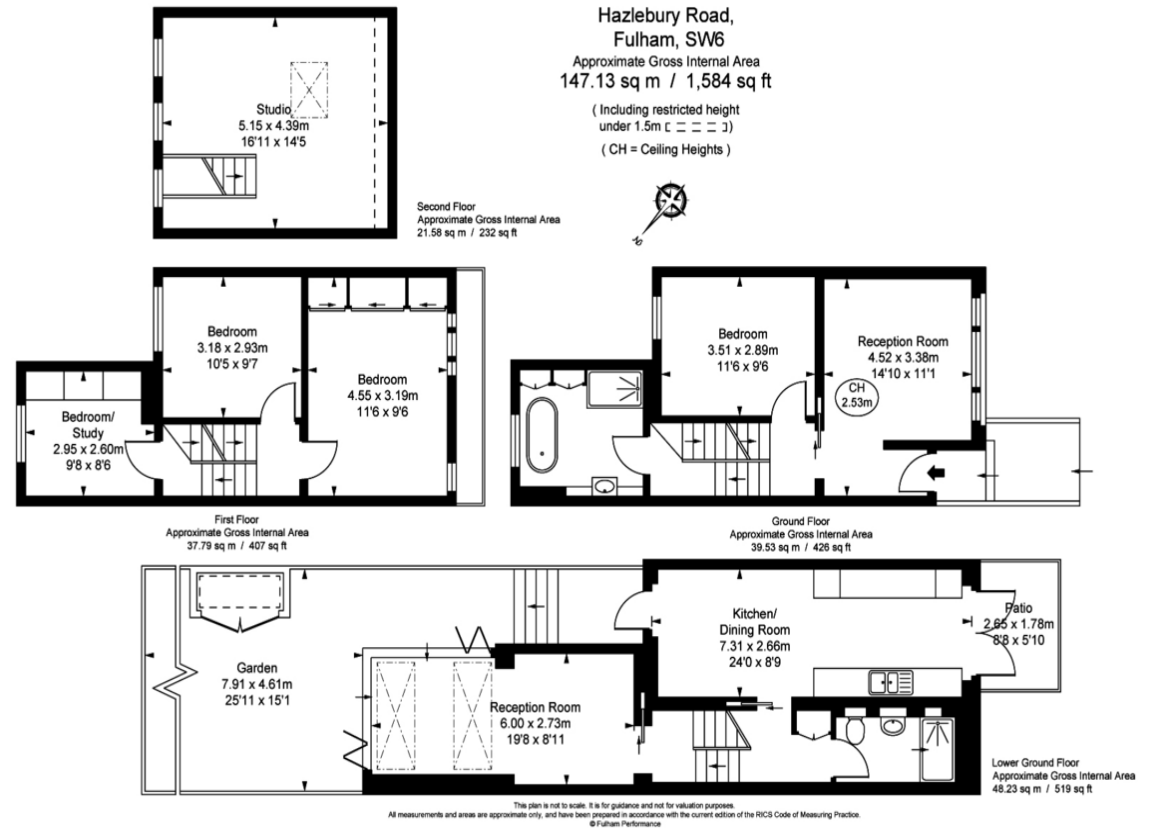


Hazlebury Road, Fulham SW6

MARTIN&CO

- 4 Bedroom Family House with Study
- Approx. 1,600 sq. ft.
- Unfurnished
- 2 Reception Room
- Separate Kitchen
- Integrated Kitchen Appliances
- Private Garden
- Patio
- Large Storage
- Managed by Martin & Co.

Spacious four bedroom family house arranged over four floors offering excellent living space in Fulham SW6. This property is approx. 1,590 sq. ft. boasts two reception rooms, and the addition of a study. The property is complete with a private garden and patio. Close to local transport links, amenities and schools.



Martin & Co Chelsea

1 Cremorne Road • London • SW10 0NA
T: 020 7351 0387 • E: chelsea@martinco.com

020 7351 0387
martinco.com

MARTIN&CO