



oakleyproperty.com



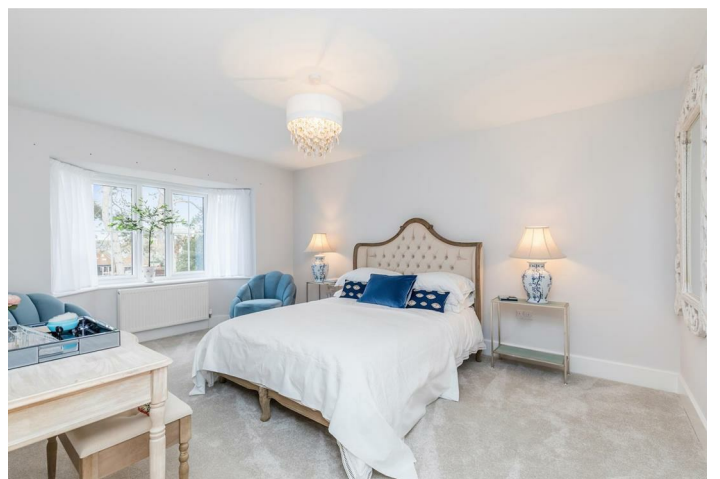
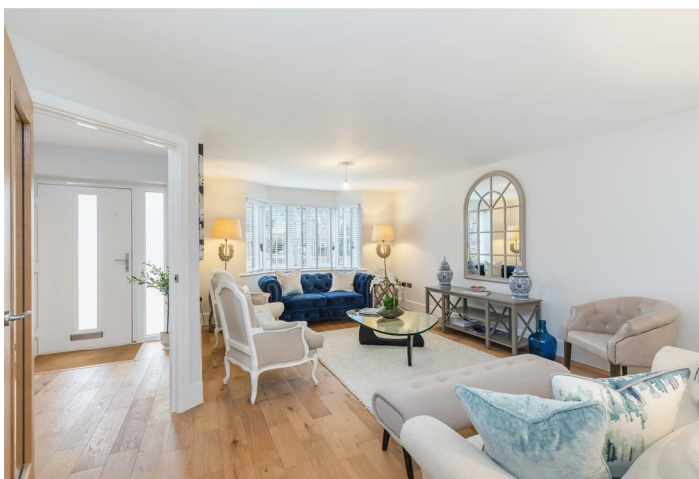
Oakley

Your Sussex Property Expert

JOHN
LEWIS
VOUCHER IN



Westdown Road, Seaford, BN25 2LA



£695,000



- £20,000 John Lewis voucher
- 5 Bedrooms
- Close to beach & train station
- BLP New homes warranty
- EPC - TBC
- Plot 3 The Belmont
- Turfed Front & Rear Gardens
- Curtains and blinds included
- Garage and off street parking
- LAST PLOT REMAINING



The Property

The Location

Seaford is the largest town in the Lewes District and is located on the coast with a large seafront, with cliffs to one end of the promenade and the Rowing club at the other end. The town centre has a variety of independent and mainstream shops, with a choice of major supermarkets. There are many leisure activities available locally, that take in the superb location such as Seaford Head Golf Course. There are also schools for all ages and a railway station. Brighton is 12 miles away along the coast road, Eastbourne and Lewes are also located nearby.

Agents Notes

Tenure

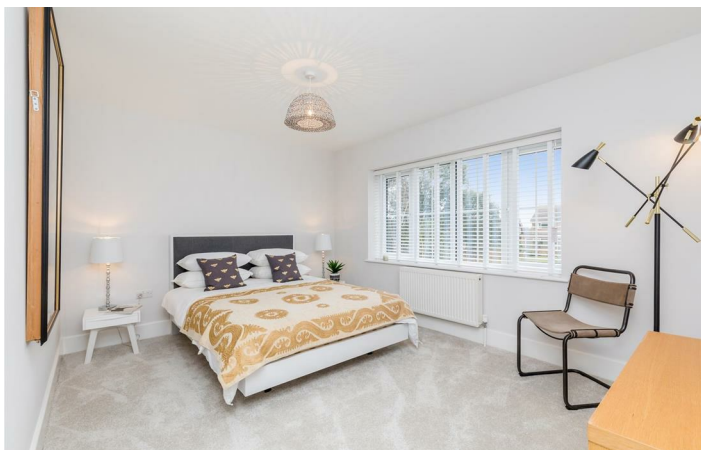
Lease Term

Years Remaining

Ground Rent

Service Charge TBC

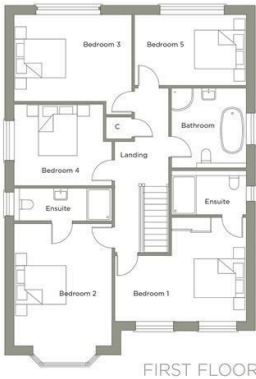
Council Tax Band



Floor Plan

WESTDOWN HEIGHTS
THE BELMONT
DETACHED HOUSE
PLOT 3

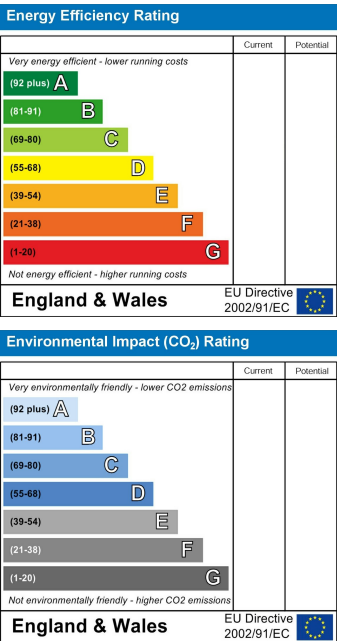
Room	Size In Metres	Size In Feet
Kitchen	3.60 x 4.74	11'8"1 x 15'55"
Living Room	3.05 x 5.20	10'00 x 17'06"
Dining/Family	6.90 x 4.90	22'63 x 16'07"
Bedroom 1	3.20 x 4.80	10'49 x 15'74"
Bedroom 2	3.59 x 4.48	11'77 x 14'69"
Bedroom 3	4.30 x 3.19	14'10 x 10'46"
Bedroom 4	3.20 x 3.00	10'49 x 9'84"
Bedroom 5	4.10 x 2.60	13'45 x 8'53"
TOTAL	183.85 sqm	1,979 Sqft



Location Map



Energy Performance Certificate



Brighton & Hove City Office
Residential Sales & New Homes

T 01273 688881
E brighton@oakleyproperty.com

Shoreham-by-Sea Office
Residential Sales,
Lettings & New Homes

T 01273 661577
E shoreham@oakleyproperty.com

Lewes Town & Country Office
Residential Sales,
Lettings and New Homes

T 01273 487444
E lewes@oakleyproperty.com

The London Office
Residential Sales

T 020 839 0888
E enquiries@tlo.co.uk

Please Note: These details have been produced in good faith and are believed to be accurate based upon the information supplied but they are not intended to form part of a contract. All statements contained in these particulars as to the properties are made without responsibility on the part of Oakley, the vendors or lessors and are NOT to be relied on as statements or representations of fact. Any intending purchasers must satisfy themselves by inspection or otherwise as to the correctness of each of the statements contained in these particulars. The vendors, Oakley and any person who work in their employment do not have any authority to make or give any representation or warranty. The total floor area shown has been taken from the EPC.