

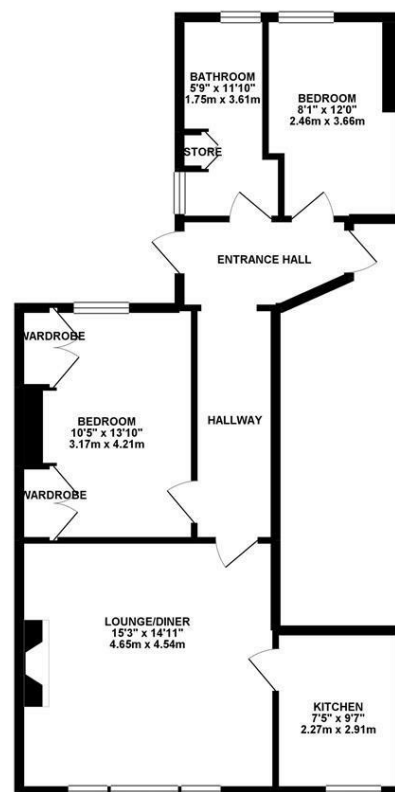
FIRST FLOOR CONVERSION

APARTMENT situated in THE HEART OF BRANDLING VILAGE CONSERVATION AREA with NO ONWARD CHAIN! This great first floor conversion apartment is ideally located on Otterburn Terrace, Jesmond. Situated within walking distance to Newcastle City Centre, Otterburn Terrace is perfectly placed close to the parade of shops on Clayton Road, Jesmond Metro Station and indeed the café culture of Jesmond.

Boasting in excess of 700 Sq ft, the accommodation briefly comprises: communal entrance hall with stairs to the first floor; private entrance hall at first floor level with access to fire escape; bedroom two; bathroom with store cupboard; 15ft lounge/diner with tall ceilings, stripped wooden flooring and period marble fireplace; kitchen; master bedroom with stripped wooden flooring and fitted wardrobes. Offered to the market with vacant possession and with gas 'Combi' central heating, an early inspection is highly recommended!

First Floor Conversion Apartment | 717 Sq ft
(66.6 m2) | Two Bedrooms | 15ft
Lounge/Diner | Bathroom | Kitchen |
Brandling Village Conservation Area | Period
Features | No Onward Chain | Excellent
Location | GCH | EPC Rating: D

GROUND FLOOR 717.26 sq. ft.
(66.64 sq. m.)



TOTAL FLOOR AREA : 717.26 sq. ft. (66.64 sq. m.) approx.

Whilst every attempt has been made to ensure the accuracy of the floorplan contained here, measurements of doors, windows, rooms and any other items are approximate and no responsibility is taken for any error, omission or mis-statement. This plan is for illustrative purposes only and should be used as such by any prospective purchaser. The services, systems and appliances shown here have not been tested and no guarantee as to their operability or efficiency can be given.
Made with Mapbox 6/2019



Offers Over £210,000

Misrepresentation Act 1967. These particulars and the descriptions and measurements herein do not constitute representation and whilst every effort has been made to ensure accuracy, this cannot be guaranteed.