



HEAD OFFICE:
14 Claughton Street
St Helens, WA10 1RS
TEL: 01744 24341
sthelens@johnbrowns.co.uk
www.johnbrowns.co.uk



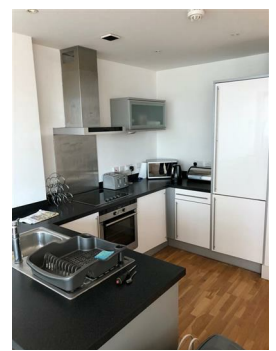
Unity Building., Liverpool, L3 9BW

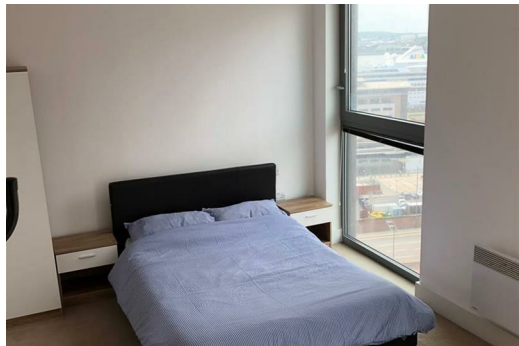
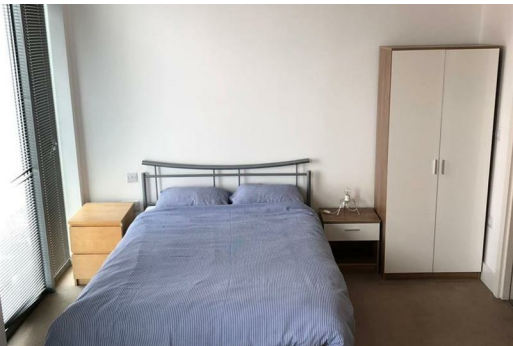
Amazing Fully Furnished Apartment in the popular Unity Building, Rumford Place in Liverpool City Centre. The accommodation is finished to high, modern specification and tastefully decorated throughout, complete with fitted kitchen, open plan lounge, two bedrooms, main bathroom and en suite shower room. There is a 24 Hour concierge at the building. Gym membership is included in the rent. Briefly comprising of; Hallway: entrance to open plan kitchen, lounge and dining room with access to Balcony with fantastic waterfront views, the two bedrooms have Fitted wardrobes one with en-suite bathroom, and a family shower room. Viewing is highly recommended and can be arranged through our office or by calling 01744 24341. Dont miss out!!

- | | | |
|---------------------------------|--------------------------------------|----------------------|
| ■ Amazing City Centre Apartment | ■ 24hr Concierge | ■ Integrated Kitchen |
| ■ Fantastic Views | ■ Finished to a High Spec Throughout | ■ Open Plan Layout |
| ■ Shower Room | ■ En-suite | ■ Two Bedrooms |
| ■ EPC Rating: C | | |

£925 PCM

113 Unity Building., Liverpool, L3 9BW







Energy Efficiency Rating		
	Current	Potential
Very energy efficient - lower running costs		
(92 plus) A		82
(81-91) B	72	
(69-80) C		
(55-68) D		
(39-54) E		
(21-38) F		
(1-20) G		
Not energy efficient - higher running costs		
England & Wales		
EU Directive 2002/91/EC		
Environmental Impact (CO ₂) Rating		
	Current	Potential
Very environmentally friendly - lower CO ₂ emissions		
(92 plus) A		76
(81-91) B	75	
(69-80) C		
(55-68) D		
(39-54) E		
(21-38) F		
(1-20) G		
Not environmentally friendly - higher CO ₂ emissions		
England & Wales		
EU Directive 2002/91/EC		