

## Flat 1, 141 Beech Road, Chorlton, Manchester, M21 9EQ



**Guide price £260,000**

A unique and charming two double bedroom apartment in a beautiful period building located in the heart of Chorlton Green. This spacious and bright apartment is stylishly presented with a bright and light interior with lots of attractive features such as feature long windows, Victorian high ceilings and solid oak floors. Enjoying open views over Chorlton Green at the end of Beech Road, this apartment is in the perfect location. In brief, the well-planned accommodation comprises; purpose built, large and modern communal entrance hall, private entrance hall, open plan 25ft lounge/kitchen/dining room, two double bedrooms and a modern white three-piece bathroom suite and a further utility/storage room. Ideal for a young family, couple or first time buyer, early viewing of this

## COMMUNAL ENTRANCE HALL

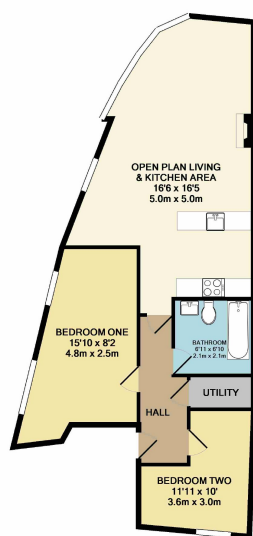
Stairs to first floor.

**OPEN PLAN LOUNGE/DINING ROOM/KITCHEN 25'2" X 18'11" (max)**

**BEDROOM ONE 15'1" (max) X 14'0" (max)**

**BEDROOM TWO 11'3" (max) X 8'5" (max)**

**BATHROOM**



TOTAL APPROX. FLOOR AREA 669 SQ.FT. (62.2 SQ.M.)  
Measurements are approximate. Not to scale. Illustrative purposes only.  
Made with Metronix 62019



**CHORLTON** Tel: 0161 860 4444 **DIDSBURY** Tel: 0161 445 4480 **DISLEY** Tel: 01663 767878 **GLOSSOP** Tel: 01457 858 888  
**HALE** Tel: 0161 929 9797 **MACCLESFIELD** Tel: 01625 434 000 **MANCHESTER** Tel: 0161 833 9499 **NORTHERN QUARTER** Tel: 0161 833 9499  
**SALE** Tel: 0161 962 2828 **SALFORD** Tel: 0161 833 9499 **WILMSLOW** Tel: 01625 532 000 **WHITHINGTON** Tel: 0161 438 2414



These particulars are believed to be accurate but they are not guaranteed and do not form a contract. Neither Jordan Fishwick nor the vendor or lessor accept any responsibility in respect of these particulars, which are not intended to be statements or representations of fact and any intending purchaser or lessee must satisfy himself by inspection or otherwise as to the correctness of each of the statements contained in these particulars.