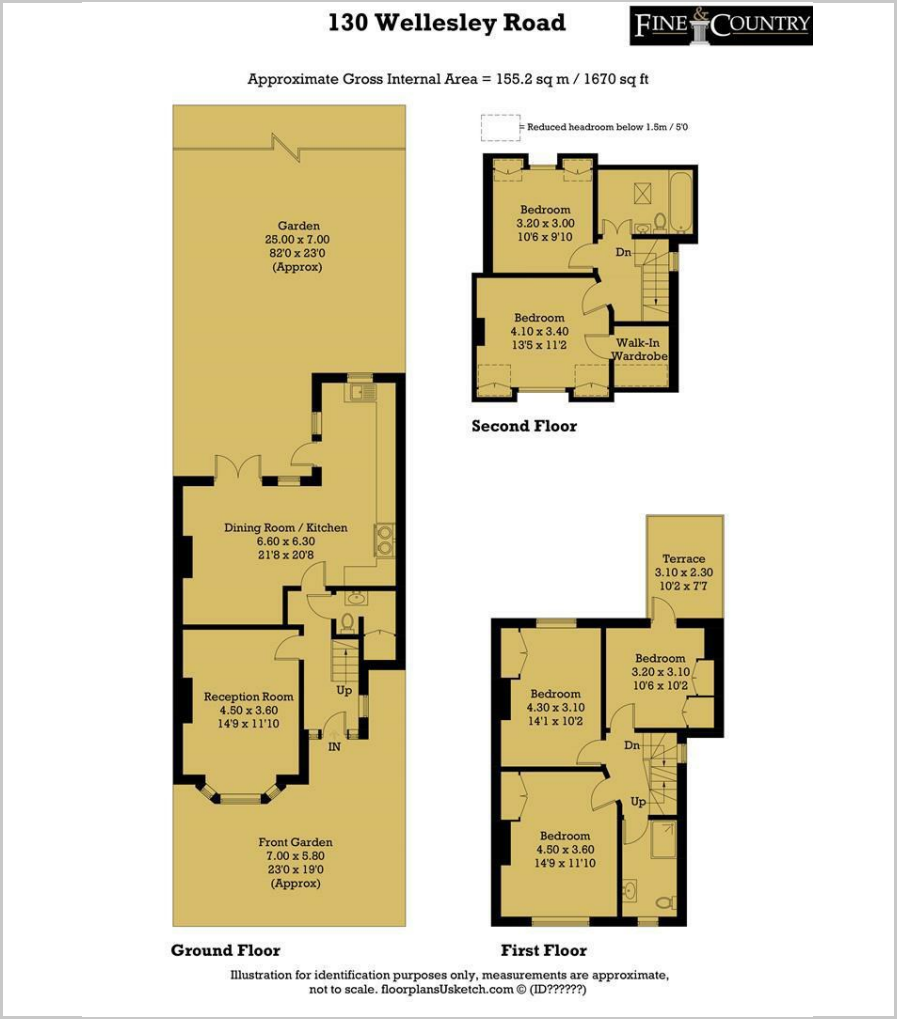




I'm Cooking

Wellesley Road, London, W4 3AP
Guide Price £1,400,000

Floor Plan



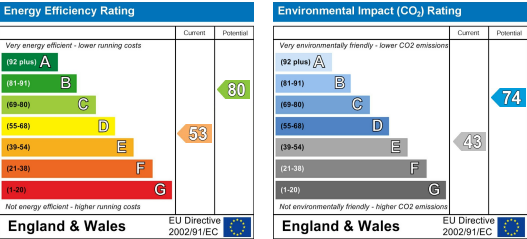
Accommodation

- Semi Detached Family Home
- Huge South Facing Garden
- Residents' Parking
- Ample Fitted Storage
- Period Features
- Spacious Front Reception
- Kitchen And Dining Room
- Five Double Bedrooms
- Two Bathrooms
- Downstairs WC

Viewing

Please contact our Fine & Country West London Office on +44 (0)20 8567 6757 if you wish to arrange a viewing appointment for this property or require further information.

Energy Efficiency Graph



These particulars, whilst believed to be accurate are set out as a general outline only for guidance and do not constitute any part of an offer or contract. Intending purchasers should not rely on them as statements of representation of fact, but must satisfy themselves by inspection or otherwise as to their accuracy. No person in this firms employment has the authority to make or give any representation or warranty in respect of the property.

Fine & Country Ealing
27 St Mary's Road,
W5 5PR
+44 (0)20 8051 2324
ealing@fineandcountry.com