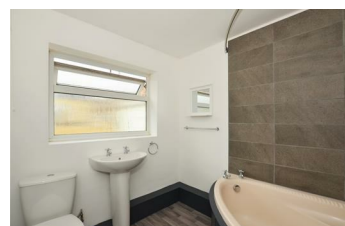


TO LET

Welcome to *your* place in Sunderland



Mortimer Street
Sunderland SR4 6QZ

Cottage
Large Lounge
Fully Fitted Kitchen
Yard to Rear with an Up and
Over door
Ready to Move Into

Two Bedrooms
Spacious Dining Room
Three Piece Bathroom Suite
Easy Reach of City Centre &
A19
0 Deposit Available

£425 PCM

Main Rooms and Dimensions

Vestibule
Hall
Lounge 13'5" into alcoves x 12'8"
Dining Room 13'7" x 15'8" (maximum
measurement including stair
Kitchen 14'9" x 7'8"
Lobby
Bathroom
First Floor Landing

Bedroom 1 16'0" x 5'6" (approximate
measurement as a sloping

Bedroom 2 10'6" x 7'10" (approximate
measurement as a slopin

Outside

Lettings Important Notice

Lettings Viewing

Opening Times

Ombudsman

0 Deposits



Visit www.peterheron.co.uk or call 0191 510 3323

Tried. Trusted. Recommended.