



1,323  
sq ft



5



1



2

**REDBRIK**  
ESTATE AGENTS



Helping you find  
your home at...

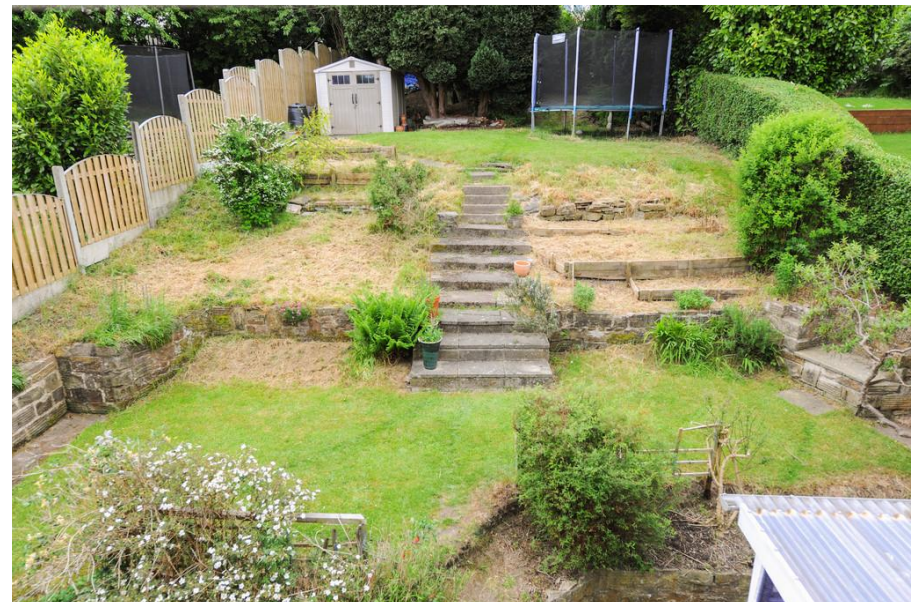
Carter Knowle Avenue, Carterknowle  
Guide Price £340,000 to £350,000

£340,000 to £350,000 (Guide Price) Located on a quiet road in the much sought after suburb of Ecclesall is this beautifully presented and well maintained five bedroom semi-detached house.

- Five Bedroom Semi-Detached House
- Modern Fitted Breakfast Kitchen With Integrated Cooking Appliances
- Fantastic Open Plan Living/Dining Space
- Family Bathroom With Separate Shower
- Sought After location
- Enclosed Rear Garden With Lawn & Patio
- Off-Street Parking & Garage
- GCH & uPVC Double Glazing
- Downstairs W.C & Sun Room
- Energy Rating TBC.

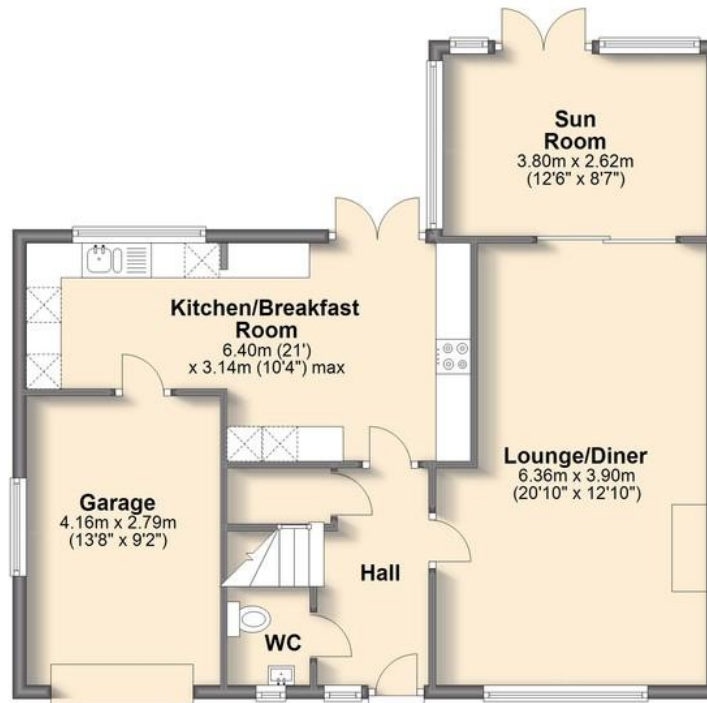
Deceptively spacious having been extended to the side the property provides 1323 sq. ft of well ordered, flexible accommodation set across two levels, private enclosed rear garden and ample off street parking with garage. Well placed for local shops/amenities, transport links, renowned schools and a short distance to Millhouses park.





### Ground Floor

Approx. 60.7 sq. metres (653.3 sq. feet)



### First Floor

Approx. 62.3 sq. metres (670.6 sq. feet)



We endeavour to make these particulars as accurate as possible, but they should only be used as guidance and they do not constitute any part of the contract. All measurements are approximate and no guarantees are made to the services, heating systems, appliances (if any) or fittings as to their working order and no warranty can be given or implied. You may download, store and use this material for your own personal use and research. You may not republish, retransmit, redistribute or otherwise make the material available to any party or make the same available on any website, on or offline service or hard copy without the website owner's express written consent. The website owner's copyright must remain on all reproductions of material taken from this website.