

Ascend

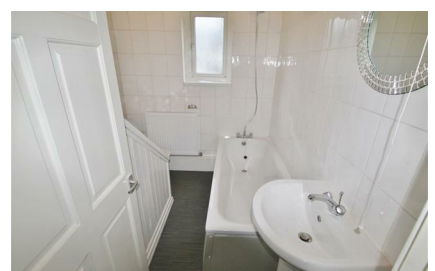
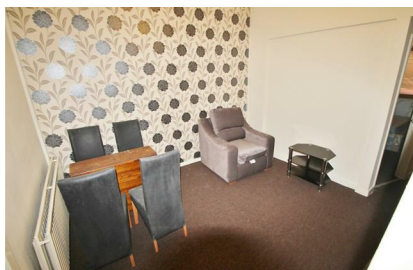
Built on higher standards



28 Garden Street Manchester M30 0EZ

- Two bedrooms
- Two reception rooms
- Rear yard
- Furnished
- End Terrace
- Close to Eccles town centre
- Close to great transport links
- Available 9th August 2019

£600

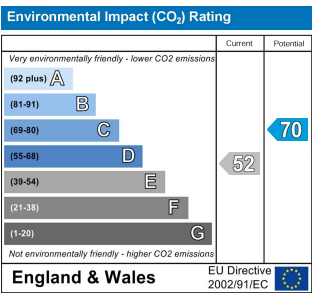
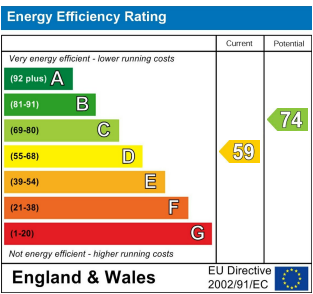


Ascend are delighted to offer for rent this two bedroom end terrace in Eccles. With two reception rooms downstairs plus a separate kitchen and yard to the rear, this property offers a good deal of space and is offered on a furnished basis.

Located close to Eccles town centre there is access to a wide range of amenities as well as great transport links including train, tram and bus plus the motorway network.

For more information or to arrange your appointment to view please contact the office on 0161 707 7584. Images are for marketing purposes only.

Available 6th August 2019



Ascend

Built on higher standards

0161 707 7584

192 Monton Road, Monton, Manchester, M30 9PY

monton.sales@ascendproperties.com,
monton.lettings@ascendproperties.com
www.ascendproperties.com



These particulars, whilst believed to be accurate are set out as a general outline only for guidance and do not constitute any part of an offer or contract. Intending purchasers should not rely on them as statements of representation of fact, but must satisfy themselves by inspection or otherwise as to their accuracy. No person in this firm's employment has the authority to make or give any representation or warranty in respect of the property