



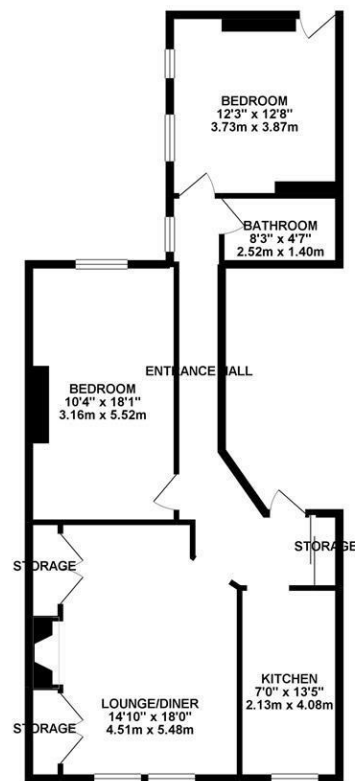
FIRST FLOOR CONVERSION

APARTMENT situated within THE HEART OF JESMOND! Set behind communal gardens and occupying the first floor of this sensitive conversion, a generous two-bedroom apartment centrally located on Osborne Road, Jesmond. Osborne Road is conveniently located to give excellent access to the shops, cafés, restaurants and nightlife of Jesmond. Excellent local transport links are also close by with both West Jesmond and Jesmond Metro Stations both a short walk away.

Boasting close to 900 Sq ft and with tall ceilings, the accommodation briefly comprises: communal entrance with staircase to first floor; private entrance hall with secure entry-phone and store cupboard; 18ft lounge/diner with fitted storage and period fireplace; kitchen; bedroom one which measures 18ft with west facing window. The central hallway then leads to the rear and gives access to a second double bedroom with access to fire escape and bathroom. With gas 'Combi' central heating, this great apartment demands an early internal inspection.

Conversion Apartment | 857 Sq ft (79.6m²)
| First Floor | Two Double Bedrooms | 18ft Lounge/Diner | Kitchen | Bathroom |
Central Location | GCH | EPC Rating:
TBC

GROUND FLOOR 857.71 sq. ft.
(79.68 sq. m.)



TOTAL FLOOR AREA : 857.71 sq ft (79.68 sq. m.) approx.

Whilst every attempt has been made to ensure the accuracy of the floorplan contained herein, measurements of doors, windows, rooms and any other items are approximate and no responsibility is taken for any error, omission or mis-statement. This plan is for guidance purposes only and should be used as such by any prospective purchaser. The services, systems and appliances shown have not been tested and no guarantee as to their operability or efficiency can be given.
Made with Metropix 62019



Offers Over £225,000

Misrepresentation Act 1967. These particulars and the descriptions and measurements herein do not constitute representation and whilst every effort has been made to ensure accuracy, this cannot be guaranteed.

