

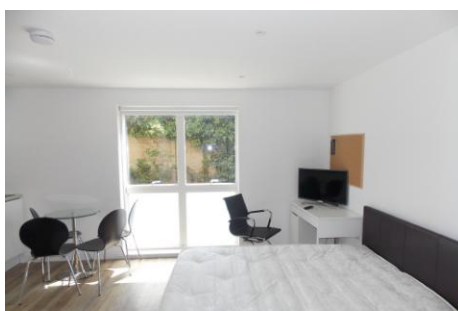


PRIMROSE STREET, CAMBRIDGE, CB4 3EH

£175,000



INVESTMENT OPPORTUNITY ONLY within an EXCLUSIVE STUDENT DEVELOPMENT. Has been let for £760 per month giving a GREAT RENTAL RETURN of around 4.5% net. This studio apartment is located on the ground floor in a superb location at the end of a quiet no through road close to city and is finished to a good standard.



Primrose Lodge is a prestigious student development of exclusive apartments available from private landlords and has a total of 30 units. The building benefits from a security entry phone system with CCTV and security lighting to ensure the ongoing high level of safety and security for the residence. Students are also supplied with a secure internal bike storage room with bike racks for the use of the residence along with a secure communal bin store. There is no parking available at the development.

Cambridge

104 Cherry Hinton Road
Cambridge CB1 7AJ
01223 214400

Histon

19 High Street, Histon
Cambridge CB24 9JD
01223 235111

Willingham

Stocks Corner, High Street
Willingham, Cambs CB24 5ES
01954 260952

Newmarket

16a High Street
Newmarket, Suffolk CB8 8LB
01638 660303

hello@tylers.net | **TYLERS.NET**

OPEN PLAN KITCHEN/DINING/BED SITTING ROOM

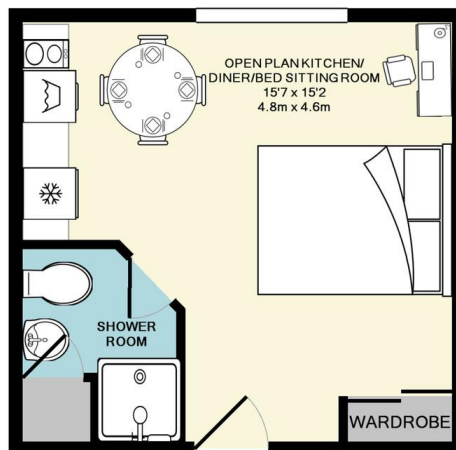
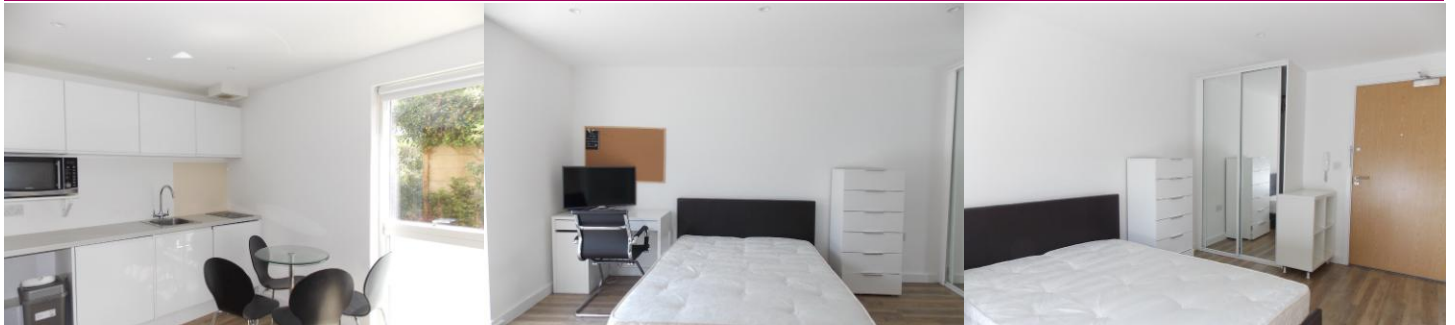
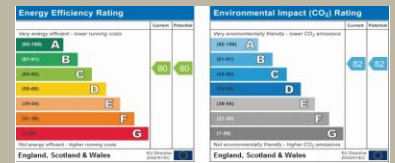
15' 7" x 15' 2 max." (4.75m x 4.62m) Double glazed window to rear aspect over looks some of the communal gardens. Security entry phone system. In set spot lighting. Wood effect Vinyl flooring. Built in wardrobe with mirror facia. Ample power points. Smoke detector. Extractor fan. Wall mounted thermostat control unit. Kitchenette Area comprising of a stainless steel sink unit. Top and base units with work surfaces over. Integrated washing machine, fridge and two ring electric hob. Microwave stand.

SHOWER ROOM

Comprising of a shower cubicle. Vanity wash hand basin. Close coupled W.C. Electric heated towel rail. Inset spot lighting. Electric extractor fan. Cupboard housing pressurised hot water tank.

COMMUNAL AREAS

Primrose Lodge caters thoroughly for the communal needs of its tenants with a communal living room, which is shared with all residents within the block and has a sofa, table and chairs creating an ideal socialization area. There is also a study room which is a separate quiet room where desks and chairs are provided with power points and broadband connection points so students can work together without the hustle and bustle that may be present in the communal lounge, which happens to opposite this apartment. To the rear of the block is a communal garden laid mainly to lawn with shrubs, trees and borders which provides an outside space to study or just socialize with friends.



Whilst every attempt has been made to ensure the accuracy of the floor plan contained here, measurements of doors, windows, rooms and any other items are approximate and no responsibility is taken for any error, omission or mis-statement. This plan is for illustrative purposes only and should be used as such by any prospective purchaser. The services, systems and appliances shown have not been tested and no guarantee as to their operability or efficiency can be given.

As the sellers agent we are not surveyors or conveyancing experts and as such we cannot and do not comment on the condition of the property, or issues relating to title or other legal issues that may affect this property, unless we have been made aware of such matters. Interested parties should employ their own professionals to make such enquiries before making any transactional decisions. Tylers for themselves and for the Vendors or Lessors of this property declare that these particulars are given as a general outline and whilst intended to be accurate do not constitute nor form any part of an offer or contract. Intending purchasers or tenants must satisfy themselves by personal inspection or otherwise as to the correctness of each statement. Fixtures, fittings and appliances have not been tested by Tylers. No person in the employment of Tylers has the authority to make or give any representation or warranty whatsoever in relation to this property. All measurements are approximate.



Tylers Independent Estate Agents is a trading name of Tylers Property Partnership Ltd
Registered address; Salisbury House, Station Road, Cambridge, CB1 2LA Company Number 7535939 VAT Number 934 673 206

