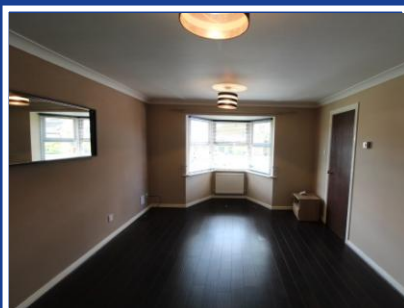




Gateley Avenue,
Blyth
£650 pcm



Lennon
Properties

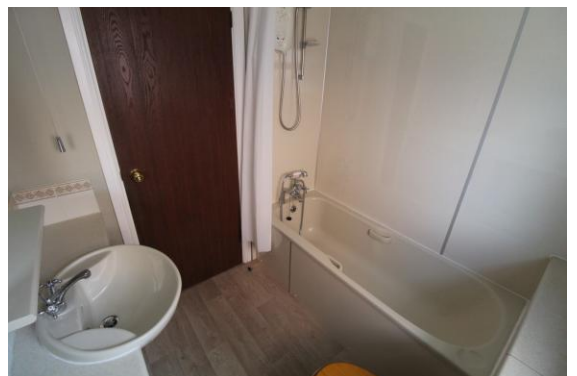


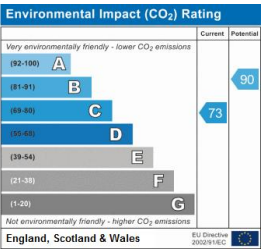
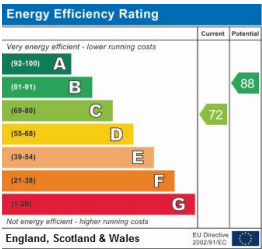
Gateley Avenue,
Blyth,
NE24 3HG

£650 pcm

TWO BEDROOMS - DETACHED BUNGALOW - CORNER PLOT - GAS CENTRAL HEATING - UPVC DOUBLE GLAZING - FRONT & REAR GARDENS - DRIVEWAY - BOND REQUIRED

Two bedroom detached bungalow located on Gateley Avenue, Blyth. The property is located on the South Beach Estate offering good transport links within close proximity, local amenities & the seafront. Internally comprising of; Entrance vestibule, Kitchen, Lounge, Bathroom, Bedroom One & Bedroom Two. Externally comprising of; front & rear gardens, driveway & is located on a corner plot. To view, please call us or





These particulars are intended to give a fair and reliable description of the property but no responsibility for any inaccuracy or error can be accepted and do not constitute an offer or contract. We have not tested any services or appliances (including central heating if fitted) referred to in these particulars and the purchasers are advised to satisfy themselves as to the working order and condition. If a property is unoccupied at any time there may be reconnection charges for any switched off / disconnected or drained services or appliances – All measurements are approximate. MONEY LAUNDERING REGULATIONS 2003 intending purchasers will be asked to produce identification and proof of financial status when an offer is received. We would ask for your co-operation in order that there will be no delay in agreeing the sale.

1 Seaforth Street, Blyth, Northumberland, NE24 1AY

01670719600

Email: blyth@lennonproperties.co.uk

www.lennonproperties.co.uk



Lennon
Properties