



MILES ESTATE AGENTS

127 South Road, Taunton, TA1 3ED





A superb 3 storey Victorian town house offering well presented and spacious accommodation including 3 reception rooms and 5 good size bedrooms, in this convenient location to the south of the town centre. Easy access to Bishop Foxs, Kings College and Richard Huish College. Lovely enclosed garden and off road parking for several cars - early viewing highly recommended.







## Features

- Entrance Hall
- Spacious Sitting Room
- Family Room
- Dining Room
- Good Size Kitchen
- Cloakroom
- 5 Bedrooms
- 2 Shower Rooms
- Family Bathroom
- Lovely Enclosed Garden
- Off Road Parking for Several Cars



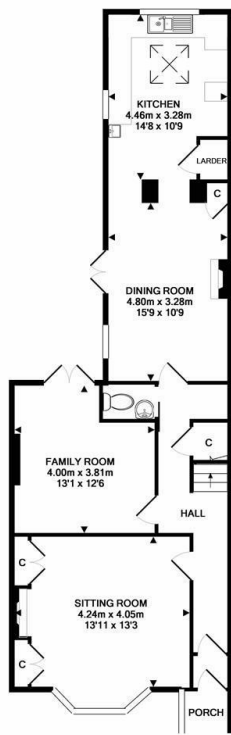




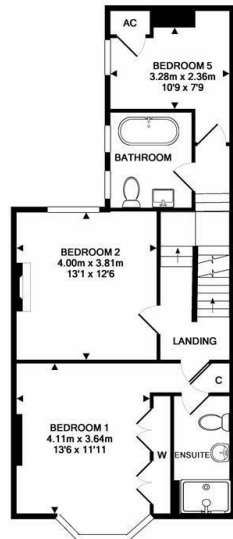




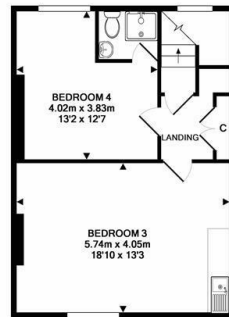




GROUND FLOOR  
APPROX. FLOOR  
AREA 85.4 SQ.M.  
(865 SQ.FT.)



1ST FLOOR  
APPROX. FLOOR  
AREA 53.9 SQ.M.  
(588 SQ.FT.)



2ND FLOOR  
APPROX. FLOOR  
AREA 45.4 SQ.M.  
(489 SQ.FT.)

TOTAL APPROX. FLOOR AREA 189.6 SQ.M. (2041 SQ.FT.)  
Made with Metropac ©2018

Energy Efficiency Rating		
	Current	Potential
Very energy efficient - lower running costs		
(92 plus) <b>A</b>		
(81-91) <b>B</b>		
(69-80) <b>C</b>		
(55-68) <b>D</b>		<b>68</b>
(39-54) <b>E</b>	<b>31</b>	
(21-38) <b>F</b>		
(1-20) <b>G</b>		
Not energy efficient - higher running costs		
<b>England &amp; Wales</b>	EU Directive 2002/91/EC	



Viewings strictly through the selling agents:

**Miles Estate Agents**

2 Piffin Lane, Bishops Lydeard, Taunton, Somerset, TA4 3AS

**Tel: 01823 470 500**

lydeard@milesestateagents.co.uk



**rightmove**

**Zoopla.co.uk**

**PrimeLocation.com**

**MILES ESTATE AGENTS**