

Weston Turville

258 Wendover Road Weston Turville HP225TJ

GUIDE £850,000



FINE & COUNTRY



A FINE FAMILY HOME WITH A LOVELY LARGE LEVEL GARDEN AND A DOUBLE GARAGE



A truly lovely family home set in large level gardens with views to the front over fields towards the Chilterns. Located off the Wendover Road, this spacious home falls within excellent school catchments for both primary and secondary schools including Aylesbury Grammar schools and The John Colet in Wendover. The design of this home is spot on. The spacious entrance hall with the central oak staircase is an impressive first impression. The sitting room is warm and inviting with the fireplace fitted with a wood burning stove is a lovely focus. The study and snug are both useful spaces where work and play can be left behind closed doors. The main feature of this lovely home is the large open plan kitchen/family/dining space which enjoys views over the rear garden and can be accessed via bifold doors. Outside you have driveway parking for several vehicles and a double garage. A super family home!

At a Glance

- BEAUTIFULLY DESIGNED FOR MODERN DAY LIVING
- FOUR DOUBLE BEDROOMS THREE BATHROOMS
- FLEXIBLE ACCOMMODATION ON GROUNDS FLOOR WITH FOUR SEPARATE RECEPTION SPACES

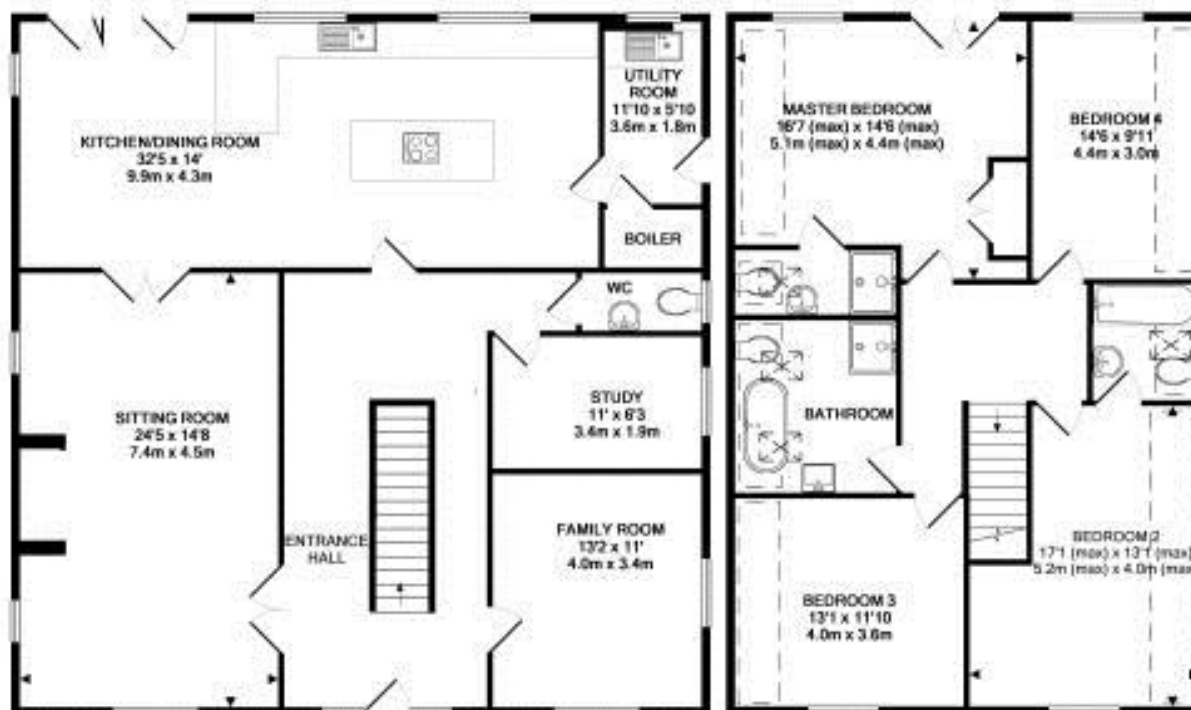


Accommodation

- ENTRANCE HALL
- SITTING ROOM WITH WOOD BURNING STOVE
- SNUG
- KITCHEN/DINING/FAMILY SPACE
- STUDY
- PRINCIPAL BEDROOM WITH ENSUITE SHOWER ROOM
- GUEST BEDROOM WITH ENSUITE SHOWER ROOM
- TWO FURTHER DOUBLE BEDROOMS
- FAMILY BATHROOM
- DOUBLE GARAGE WITH DRIVEWAY PARKING FOR SEVERAL VEHICLES
- LARGE GARDENS
- HOME OFFICE/ STUDIO



Guide Price
£850,000



GROUND FLOOR
APPROX. FLOOR
AREA 1457 SQ.FT.
(135.4 SQ.M.)

1ST FLOOR
APPROX. FLOOR
AREA 1063 SQ.FT.
(98.2 SQ.M.)

WENDOVER ROAD, WESTON TURVILLE HP22 6TJ (PRODUCED FOR HAMMETT HAYWARD)
TOTAL APPROX. FLOOR AREA 2460 SQ.FT. (228.6 SQ.M.)
No accuracy to this image, but all measurements are guaranteed.
Made with Metaplan 02012

Additional information

Services: Mains water, electricity and gas.

Heating: Gas fired central heating
With radiators throughout.

Fixtures and fittings: All fixtures and fittings are excluded but may be available by separate negotiation

Postcode: HP22 5TJ

Council Tax: Band E

Local Authority: Aylesbury Vale

District Council

Energy rating: C

Fine&Country Vale and Chilterns

14 High Street

Wendover

Buckinghamshire HP22 6EA

01296 625919

wendover@fineandcountry.com

FINE & COUNTRY

Location

Weston Turville is a village with a small parade of shops and its own golf and sailing club. There are excellent nursery, infant and junior schools within the village. Weston Turville is situated about two miles from the larger village of Wendover. Wendover has a good range of local shops and amenities. Excellent schooling is provided including The John Colet Secondary School which is situated in Wendover and Grammar Schools are in Aylesbury (four miles). Private schooling is also available locally. Stoke Mandeville main line station to Marylebone is within a short walk of approximately 7 minutes .