



Long Mynd Road, Bournville Village Trust, Birmingham, B31 1HJ | £245,000
Four Bedroom Semi-Detached House

Features:

- Four Bedrooms
- Modern Main Bathroom and Further Shower Room
- Two Reception Rooms
- Kitchen
- Rear Garden
- Block Paved Driveway and Garage

Summary:

PART EXCHANGE CONSIDERED A particularly well presented four bedroom semi-detached house, offered with two reception rooms, a modern bathroom and off road parking with a garage, situated in the sought after area of the Bournville Village Trust, Birmingham.

Description:

The accommodation, in brief, features:- Block Paved Driveway and Garage, Enclosed Porch, Hall, Lounge with Sliding Patio Door to Rear Garden, Kitchen with Integrated Double Oven, Electric Hob and Extractor, Dining Room, Stairs to First Floor Landing, Master Bedroom with Built In Wardrobes, Double Bedroom Two, Bedrooms Three and Four, Modern Main Bathroom with Shower over Bath and Further Shower Room.

Outside:

Outside, the property enjoys a rear garden with a paved patio, lawn and hedged boundaries.

Location:

Situated within the Bournville Village Trust, the property enjoys a prestigious location within easy distance of shopping and eating facilities, plus easy access for commuters into Birmingham City Centre, The University of Birmingham, QE Hospital and The Royal Orthopedic Hospital. Nearby are Northfield and Bournville Train Stations and the recently regenerated Longbridge Town Centre Development (former MG Rover car plant), home to the largest Marks and Spencers in the Midlands.



Room Dimensions:

Porch

3' 0" x 6' 1" (0.93m x 1.87m)

Hall

Dining Room:

8' 7" x 8' 11" (2.62m x 2.73m)

Kitchen:

9' 9" x 8' 11" (2.99m x 2.73m) max

Lounge:

11' 8" x 21' 3" (3.58m x 6.48m) max

Garage:

21' 10" x 8' 3" (6.66m x 2.52m)

Stairs To First Floor Landing

Master Bedroom:

8' 3" x 12' 11" (2.54m x 3.96m) max

Bathroom:

8' 0" x 7' 6" (2.46m x 2.29m)

Bedroom Two:

13' 1" x 8' 2" (4.01m x 2.49m)

Bedroom Three:

9' 6" x 8' 0" (2.90m x 2.45m)

Bedroom Four:

9' 3" x 8' 2" (2.83m x 2.51m) max

Bathroom:

5' 8" x 4' 11" (1.74m x 1.51m)

EPC: C

Council Tax Band: D

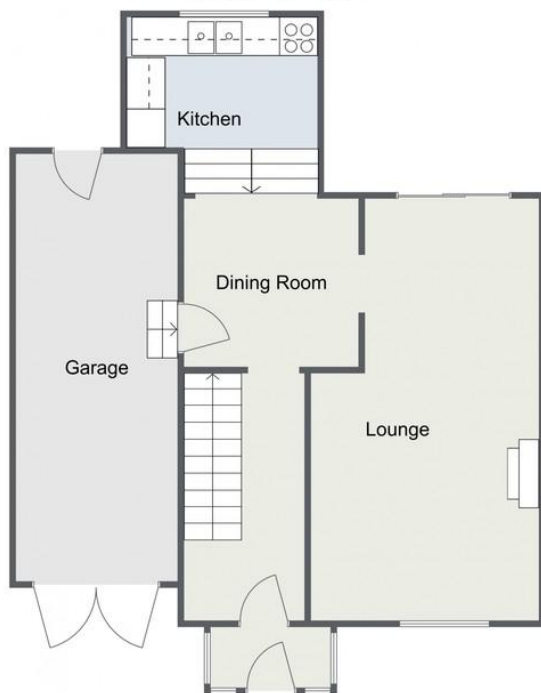
Tenure: Freehold

For more information on Long Mynd Road or to arrange a viewing, please call the Rubery Office on 0121 453 4349



Long Mynd Road, Northfield

Ground Floor



First Floor



Total Area Approx
115.0 sq metres
(1237.9 sq ft)

For illustrative purposes only. Decorative finishes, fixtures & fittings do not represent the current state of the property. Measurements are approximate & not to scale.
Floor Plans made using RoomSketcher.

Long Mynd Road, Northfield

Ground Floor



First Floor



Total Area Approx
115.0 sq metres
(1237.9 sq ft)

For illustrative purposes only. Decorative finishes, fixtures & fittings do not represent the current state of the property. Measurements are approximate & not to scale.
Floor Plans made using RoomSketcher.

Please read the following: These particulars are for general guidance only and are based on information supplied and approved by the seller. Complete accuracy cannot be guaranteed and may be subject to errors and/or omissions. They do not constitute a contract or part of a contract in any way. We are not surveyors or conveyancing experts therefore we cannot and do not comment on the condition, issues relating to title or other legal issues that may affect this property. Interested parties should employ their own professionals to make enquiries before carrying out any transactional decisions. Photographs are provided for illustrative purposes only and the items shown in these are not necessarily included in the sale, unless specifically stated. The mention of any fixtures, fittings and /or appliances does not imply that they are in full efficient working order and they have not been tested. All dimensions are approximate. We are not liable for any loss arising from the use of these details.