

Santorini, Leeds, LS12 1DP

£925

Available from: 27th July 2019

2 Bedroom, Apartment

hudson
moody
wass



Well presented TWO BEDROOM apartment with BALCONY and secure PARKING. FURNISHED.

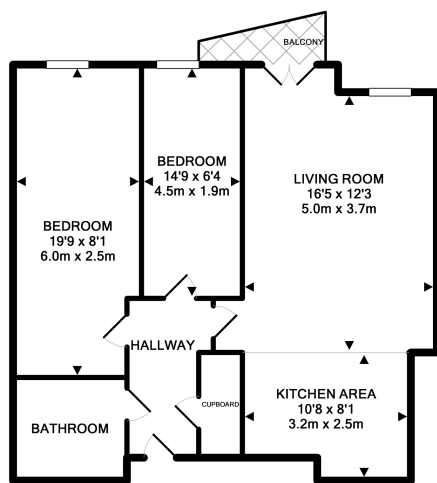
City Island is only a short walk from LEEDS TRAIN STATION and BUSINESS DISTRICT, built around a central piazza with water feature and bordering both the canal and river Aire.



0113 245 7887 / info@hmwass.co.uk / www.hmwass.co.uk

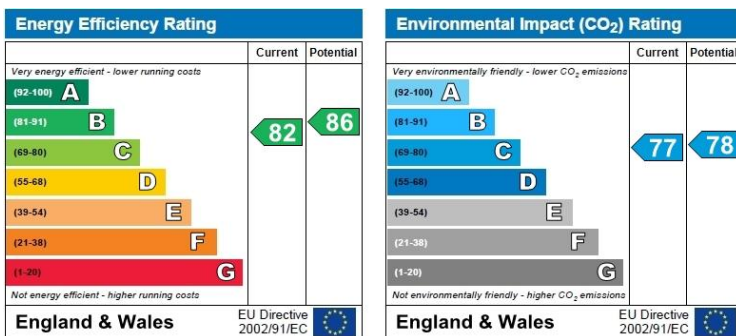


Floor plans



TOTAL APPROX. FLOOR AREA 660 SQ.FT. (61.3 SQ.M.)
 Whilst every attempt has been made to ensure the accuracy of the floor plan contained here, measurements of doors, windows, rooms and any other items are approximate and no responsibility is taken for any error, omission, or mis-statement. This plan is for illustrative purposes only and should be used as such by any prospective purchaser. The services, systems and appliances shown have not been tested and no guarantee as to their operability or efficiency can be given.
 Made with Metropix ©2012

EPC



Important notice

These particulars have been prepared as accurately and as reliably as possible, but should not be relied upon as "statements or fact". We have not tested any services, appliances, equipment or facilities or that the property is in good structural condition or otherwise. Any area, measurements or distances referred to are given as a guide only and are not precise. Purchasers must satisfy themselves by inspection or otherwise regarding the items mentioned above

and as to the correctness of each of the statements contained in these particulars. No person in the employ of Hudson Moody Wass has any authority to make or give representation or warranty whatsoever in relation to this property or these particulars nor enter into any contract relating to the property on behalf of the vendor.