



6 Worcester Road, Bristol, Gloucestershire BS8 3JL

Guide Price £1,495,000

An impressive 5 bedroom Victorian family town house situated in undoubtedly one of Clifton's more popular residential roads close to Clifton College and enjoying off street parking and a private south westerly facing courtyard garden. Built circa 1860 and retaining many of its original features, the comfortable accommodation (circa 2835 sq ft) is arranged over three floors with a small but usable basement / utility and study reached off the entrance hall.



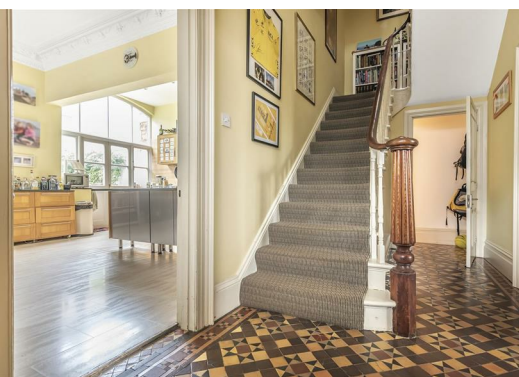
5



3



4





Energy Efficiency Rating		
	Current	Potential
Very energy efficient - lower running costs		
(92 plus) A		
(81-91) B		
(69-80) C		
(55-68) D	56	59
(39-54) E		
(21-38) F		
(1-20) G		
Not energy efficient - higher running costs		
England & Wales		EU Directive 2002/91/EC

